



43 Morris Street, Birtley, Chester Le Street, Co Durham, DH3 1DX

Offers In The Region Of £85,000

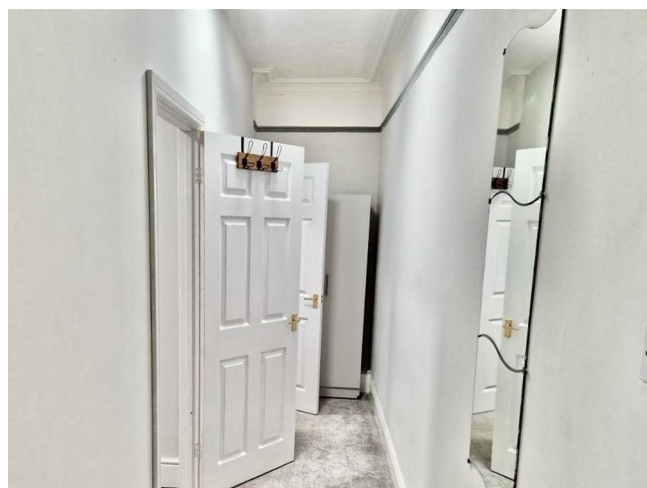
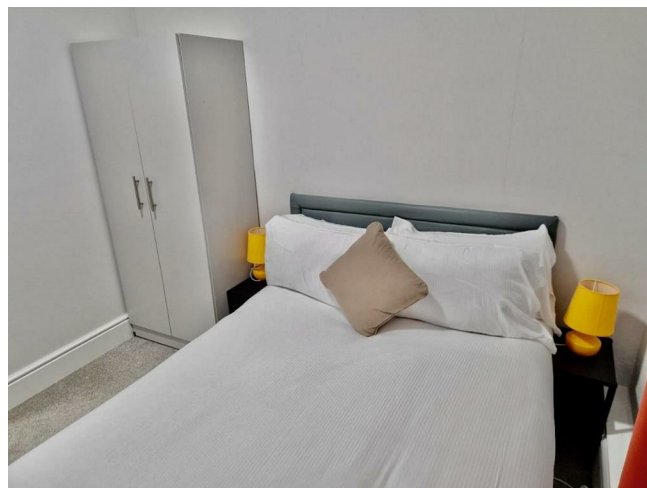
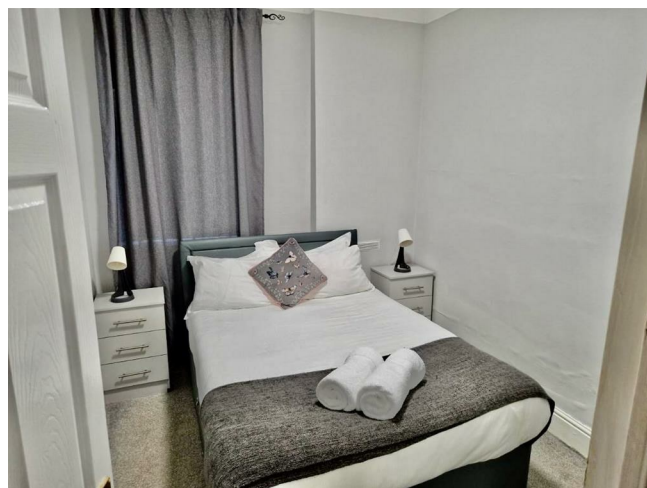
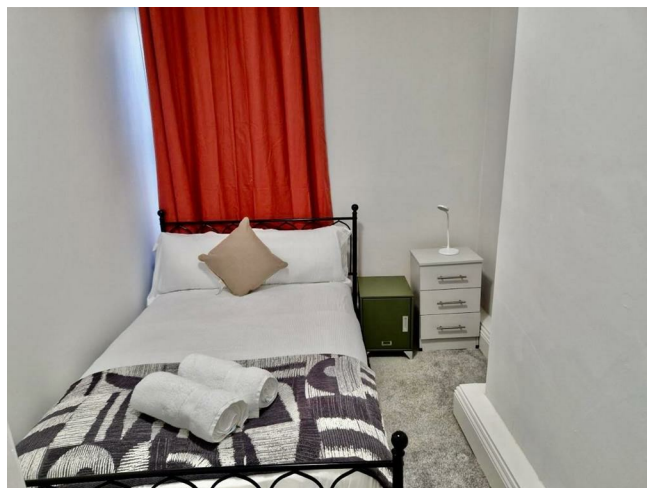


Key features

- NO ONWARD CHAIN
- THREE BEDROOM FLAT
- SPACIOUS LOUNGE
- FITTED KITCHEN
- FAMILY BATHROOM WITH SHOWER
- MODERN DECOR THROUGHOUT
- GREAT TRANSPORT LINKS
- CLOSE TO A1
- GREAT FOR FIRST TIME BUYERS OR INVESTORS
- VIEWING IS RECOMMENDED

Description

NO ONWARD CHAIN: Located on Morris Street in Birtley, we offer to the sales market this three bedroom flat. The property is located close to all amenities and is ideal for a small family. Benefiting from gas central heating and UPVC windows. The property compromises of a spacious lounge, fitted kitchen, family bathroom and has three good sized bedrooms. Externally, there is on street parking available and a low maintenance garden to the front and a rear yard. Viewing is recommended.



ENTRANCE

LOUNGE

KITCHEN

BATHROOM

BEDROOM ONE

BEDROOM TWO

BEDROOM THREE

EXTERNAL

DISCLAIMER SALES

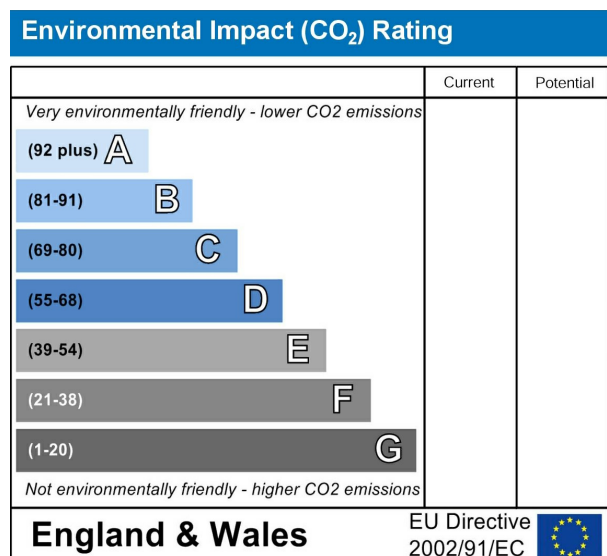
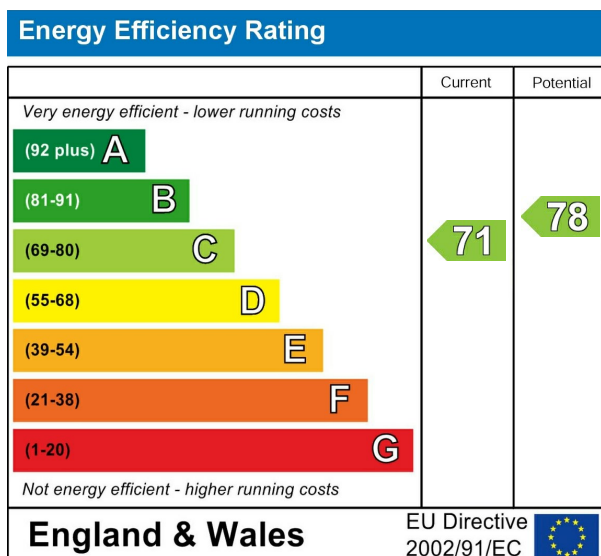
The particulars on these properties are set out as a general guidance for intended purchasers or tenants, and do not constitute part of an offer or contract. The Agent has not tested any apparatus, equipment, fixtures and fittings or services and so cannot verify that they are in working order or fit for the purpose. A Buyer is advised







to obtain verification from their Solicitor or Surveyor. References to the Tenure of a Property are based on information supplied by the Seller. The Agent has not had sight of the title documents. A Buyer is advised to obtain verification from their Solicitor. All dimensions, descriptions and distances, reference to condition and necessary permissions for use and occupation, and other details are given without responsibility. Any intending purchasers or tenants should not rely on them as statements of fact, but must satisfy themselves by inspection or otherwise as to the correctness of each of them. Items shown in photographs are NOT included unless specifically mentioned within the sales particulars. They may however be available by separate negotiation. Measurements have been taken using a laser distance meter and may be subject to a margin of error. For further information see the Consumer Protection from Unfair Trading Regulations.



212 High Street
Gateshead
Tyne And Wear
NE8 1AQ
0191 500 8 500
info@carouselestateagents.com
<https://www.carouselestateagents.com>

