



The Coach House Temperance Yard, Ebchester, Consett, County Durham,
Guide Price £225,000



Key features

- AUCTION DATE 17th DECEMBER
- PERIOD PROPERTY
- STONE BUILT
- THREE BEDROOMS
- SMALL GARDEN AREA
- BREAKFASTING KITCHEN
- DINING ROOM
- MODERN BATHROOM
- COSY LOUNGE
- EXPOSED BEAMS



Description

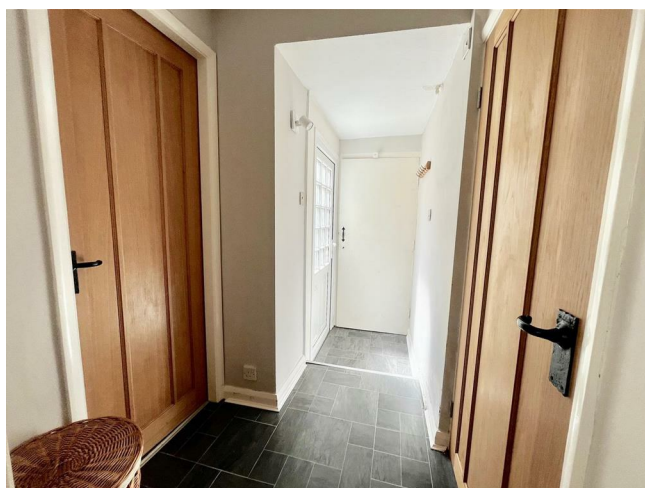
Nestled in the charming Temperance Yard of Ebchester, Consett, this period property exudes character and history. The stone-built exterior adds a touch of traditional elegance to the three-bedroom home. As you step inside, you'll be greeted by the warmth of exposed beams that tell stories of years gone by.

This property is a rare find as it comes with no onward chain, making the process of making it your own even smoother. Whether you're looking to create a cosy family home or a quaint retreat, this property offers endless possibilities to unleash your creativity and style.

Imagine enjoying your morning cup of tea in a picturesque courtyard or hosting intimate gatherings in the spacious living area. With three bedrooms, there's ample space for a growing family or for guests to stay over comfortably.

Don't miss out on the opportunity to own a piece of history in the heart of Ebchester. Embrace the charm of this period property and make it your own.

The legal pack is available to view on [underthehammer.com](https://www.underthehammer.com)



HALLWAY

LOUNGE

18'8 x 15

DINING

18'8 x 17'6

KITCHEN

12'3 x 11

BREAKFAST BAR

13'11 x 7'3

DOWNSTAIRS W.C.

5'3 x 3'7

STAIRWAY/LANDING

BEDROOM ONE

15'4 x 15'2

BEDROOM TWO

15'8 x 11'5

BEDROOM THREE

12'11 x 10'1







PLAYROOM

17'3 x 12'3

BATHROOM

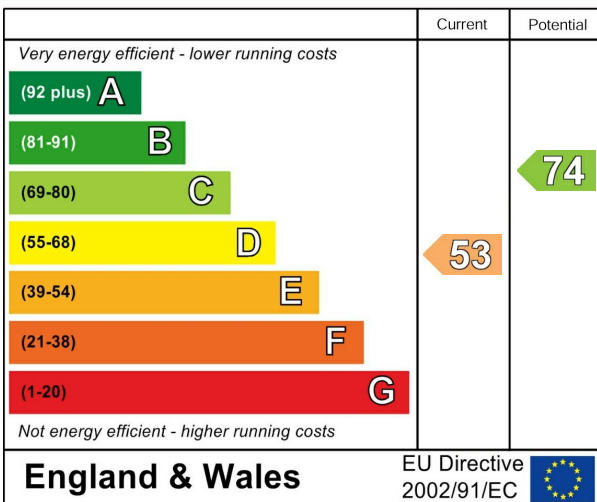
10'6 x 6'8

EXTERNAL

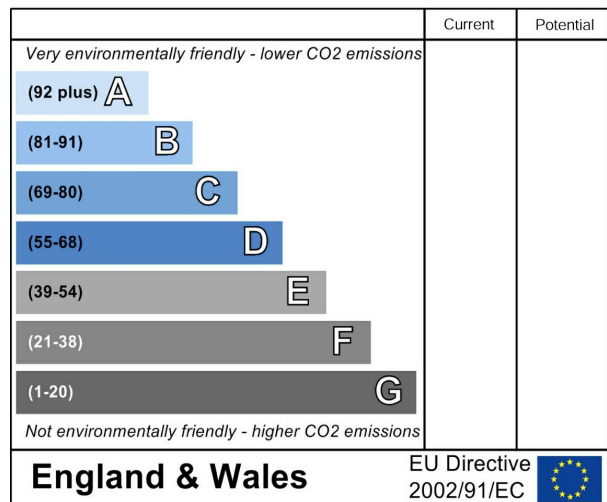
DISCLAIMER SALES

The particulars on these properties are set out as a general guidance for intended purchasers or tenants, and do not constitute part of an offer or contract. The Agent has not tested any apparatus, equipment, fixtures and fittings or services and so cannot verify that they are in working order or fit for the purpose. A Buyer is advised to obtain verification from their Solicitor or Surveyor. References to the Tenure of a Property are based on information supplied by the Seller. The Agent has not had sight of the title documents. A Buyer is advised to obtain verification from their Solicitor. All dimensions, descriptions and distances, reference to condition and necessary permissions for use and occupation, and other details are given without responsibility. Any intending purchasers or tenants should not rely on them as statements of fact, but must satisfy themselves by inspection or otherwise as to the correctness of each of them. Items shown in photographs are NOT included unless specifically mentioned within the sales particulars. They may however be available by separate negotiation. Measurements have been taken using a laser distance meter and may be subject to a margin of error. For further information see the Consumer Protection from Unfair Trading Regulations.

Energy Efficiency Rating



Environmental Impact (CO₂) Rating



212 High Street
 Gateshead
 Tyne And Wear
 NE8 1AQ
 0191 500 8 500
 info@carouselestateagents.com
<https://www.carouselestateagents.com>

