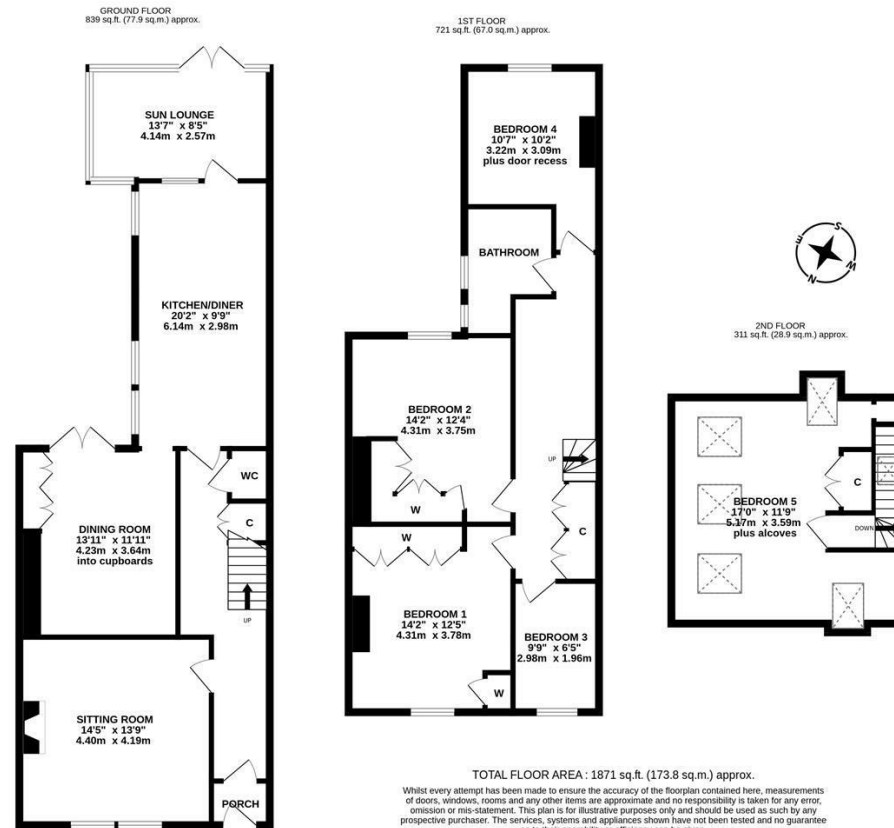




With a south facing rear garden! This five bedroom Victorian mid terrace is ideally located on the south backing side of Woodbine Road, Gosforth. Situated in the heart of Gosforth, within striking distance from the shops and restaurants of Gosforth High Street, Woodbine Road is perfectly placed close to excellent local schooling and transport links into the city and beyond.

Boasting close to 1,900 Sq ft over three floors, the accommodation briefly comprises: entrance porch through to entrance hall with stairs to first floor, under-stairs storage cupboard and under-stairs WC; sitting room with dual windows, feature fireplace and decorative ceiling rose; dining room with fitted storage cupboards and French doors leading out to the rear garden; 20ft kitchen diner with a range of fitted units, work surfaces and three windows; sun lounge with dual aspect windows and French doors leading out to the garden. The first floor landing gives access to; bedroom one with fitted wardrobe storage; bedroom two, again with fitted wardrobe storage; bedroom three; bedroom four; family bathroom complete with three piece suite and dual windows. To the second floor, a further bedroom measuring 17ft with four Velux windows and storage cupboard. Externally, a front garden laid to a mixture of gravel and block paving, with mature planting together with hedge and wall boundaries. To the rear, a generous south facing garden laid mainly to lawn with a paved pathway and planting including mature trees, flowers and shrubs, all enclosed with wall and fenced boundaries. With off street parking to the rear, a great family home nestled in a central Gosforth location, early viewings are advised!

Victorian Mid-Terrace Family Home | Three Floors | Five Bedrooms | 1,871 Sq ft (173.8m²) | Sitting Room | Dining Room | 20ft Kitchen Diner | Sun Lounge | Downstairs WC | Family Bathroom | Front Garden | Generous South Facing Rear Garden | Off-Street Parking | GCH | Excellent Location | Freehold | Council Tax Band D | EPC: D



Offers Over £550,000

IMPORTANT NOTE: These particulars and the descriptions and measurements herein do not constitute representation and whilst every effort has been made to ensure accuracy, this cannot be guaranteed.

