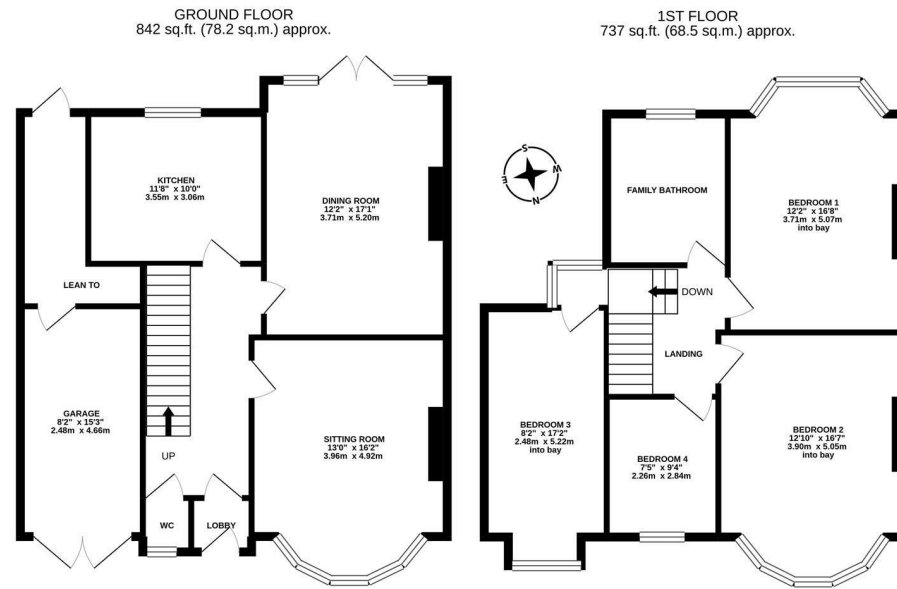




Fully Modernised Family Home with Four Bedrooms, South Facing Garden & No Onward Chain! This stylish 1930's family home is ideally located on Crossway, Jesmond. Crossway, tucked just off Towers Avenue, is ideally placed close to Jesmond Dene, outstanding local schooling, the shops, cafés and restaurants of Jesmond and Gosforth High Street. The property is also well placed to give access to local transport links with Ilford Road and West Jesmond Metro Stations both a short walk away, providing excellent links throughout the region.

Boasting close to 1,600 Sq ft, the internal accommodation briefly comprises: lobby; entrance hall with cloakroom WC and stairs to the first floor; sitting room with walk-in bay; dining room with French doors to rear garden; contemporary re-fitted kitchen with high gloss units, integrated appliances and window to garden to the ground floor. The first floor landing gives access to four bedrooms and a stylish, re-fitted family bathroom with four piece suite. Externally, the property benefits from a garden with multi-vehicle off street parking to the front. To the rear, a delightful south facing garden which is laid mainly to lawn with raised flower beds with planting, paved patio area and fenced boundaries. Well presented throughout, with solid wood flooring to the ground floor, new double glazing and a gas 'Combi' boiler, this great family home demands an early inspection.

Fully Modernised 1930's Semi-Detached Home | 1,579 Sq ft (146.7m2) | Four Bedrooms | Two Reception Rooms | Stylish Re-Fitted Kitchen with Integrated Appliances | Contemporary Family Bathroom with Four Piece Suite | Garage | Driveway | Front Garden & South Facing Rear Gardens | Excellent Location | Well Presented | No Onward Chain | DG & GCH | EPC Rating: D



**Offers Over £575,000**

**IMPORTANT NOTE:** These particulars and the descriptions and measurements herein do not constitute representation and whilst every effort has been made to ensure accuracy, this cannot be guaranteed.

