



Purpose Built, Five Bedroom Edwardian Terrace with Extended Kitchen Diner & Period Features! This great family home is ideally located on Harley Terrace, Gosforth. Harley Terrace, a stone's throw from excellent local schools, is within walking distance to the shops, cafés and restaurants of Gosforth High Street and within close proximity to Gosforth's Central Park and South Gosforth Metro Station.

Purpose built over three floors and boasting 2,330 Sq ft, the accommodation briefly comprises: entrance porch through to entrance hall with staircase to first floor and under-stairs WC; lounge with tall ceilings, walk-in bay and period fireplace; family room with wood burning stove open to 23ft kitchen diner with French doors leading to the enclosed courtyard, kitchen area with fitted wall and base units together with work surfaces, breakfasting bar and spot lighting; To the first floor, three double bedrooms, bedroom one an impressive full-width room measuring 19ft, with walk in bay, period fireplace and alcove storage; wet room with three piece suite and spot lighting. To the second floor two further bedrooms, bedroom four another full-width room with dormer window; study; stylish family bathroom, complete with four piece suite including a free standing bathtub.

Externally, a pleasant town garden to the front with mature planting and to the rear an enclosed courtyard with artificial grass, wall boundaries and gated access. With gas central heating and double-glazed windows, an early viewing is highly recommended!

Edwardian Terrace | 2,330 Sq ft (216.5m2) | Five Double Bedrooms | Lounge | Family Room | Kitchen Area | Ground Floor WC | Wet Room & Family Bathroom | Enclosed Rear Yard with Artificial Lawn | Central Location | EPC Rating: E



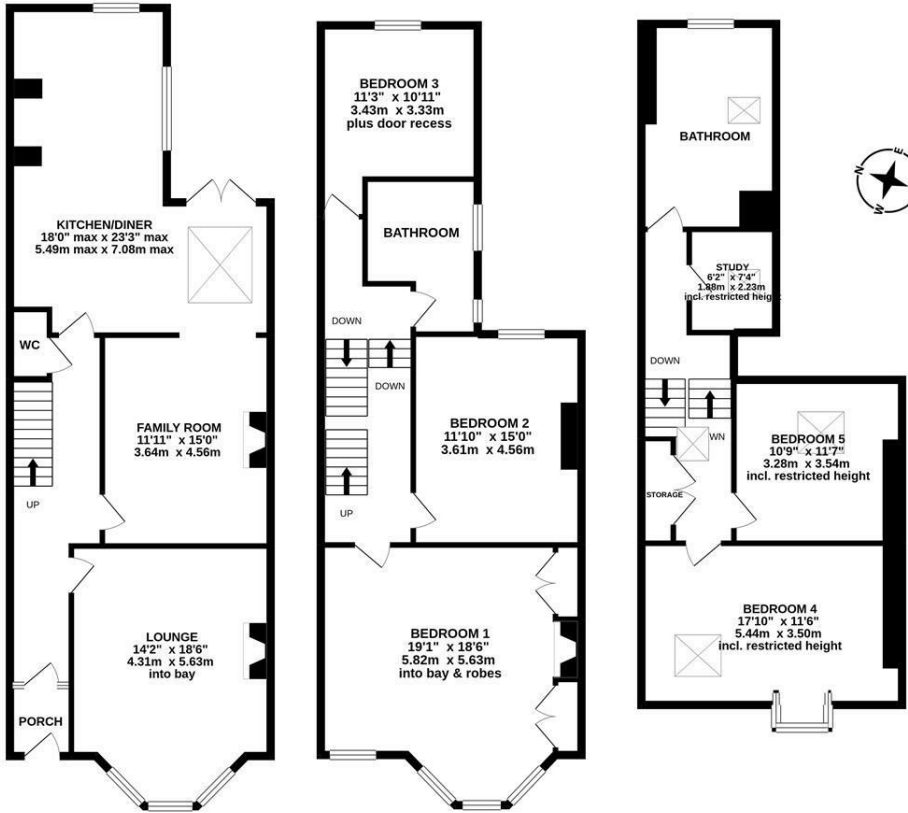
GROUND FLOOR
888 sq.ft. (82.5 sq.m.) approx.



1ST FLOOR
810 sq.ft. (75.3 sq.m.) approx.



2ND FLOOR
632 sq.ft. (58.7 sq.m.) approx.



TOTAL FLOOR AREA : 2330 sq.ft. (216.5 sq.m.) approx.

Whilst every attempt has been made to ensure the accuracy of the floorplan contained here, measurements of doors, windows, rooms and any other items are approximate and no responsibility is taken for any error, omission or mis-statement. This plan is for illustrative purposes only and should be used as such by any prospective purchaser. The services, systems and appliances shown have not been tested and no guarantee as to their operability or efficiency can be given.
Made with Metropix ©2020



Offers Over £475,000

IMPORTANT NOTE: These particulars and the descriptions and measurements herein do not constitute representation and whilst every effort has been made to ensure accuracy, this cannot be guaranteed.

