





**\*\*AVAILABLE NOVEMBER 2025\*\***

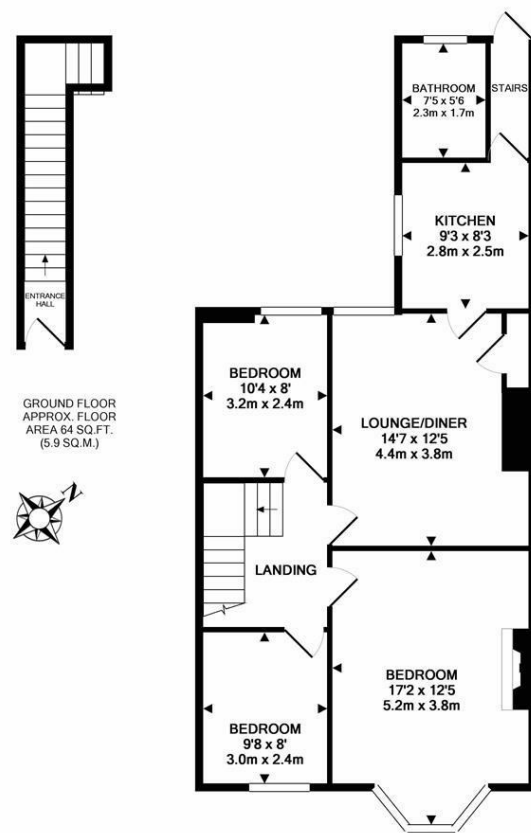
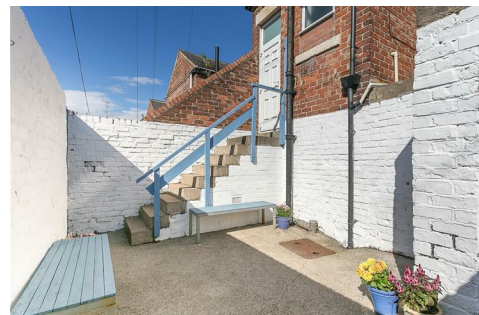
**\*\*FURNISHED\*\*** A fine example of a three bedroom, first floor Tyneside style flat located on Audley Road, South Gosforth. Well presented with a stylish kitchen, modern bathroom WC and delightful west facing rear yard! Available on a furnished basis, ideal for two professional sharers or a couple.

Boasting close to 800 Sq ft the accommodation briefly comprises: entrance hallway with stairs to first floor; lounge/diner with shelving and fitted storage to alcoves; re-fitted kitchen with integrated appliances; stylish bathroom WC with stairs leading to rear yard. To the front of the property, a large master bedroom with period slate fireplace and a walk-in bay window and views out over Jesmond Dene; two further double bedrooms, one of which could be utilised as either a guest room or study if preferred. Externally, the property benefits from a delightful west facing private rear yard with access to rear service lane to the rear of the property. Parking is found on street at the front. With double glazing and gas 'combi' central heating an early inspection is deemed absolutely essential and not to be missed!

Please Note: This property can only be let to either a single family household or a maximum of two individual sharers.

Available 3rd November 2025 | £1,100pcm | First Floor Tyneside Flat | 799 Sq ft (74.2 m2) | Furnished | Three Bedrooms | Lounge/Diner | Bathroom WC | Modern Fitted Kitchen | On Street Parking | Great Location | GCH & DG | Private West Facing Rear Yard | Can Be Let To Maximum Two Individual Sharers | Council Tax Band: A | EPC Rating: D

**£1,100 PCM**



Whilst every attempt has been made to ensure the accuracy of the floor plan contained here, measurements of doors, windows, rooms and any other items are approximate and no responsibility is taken for any error, omission, or mis-statement. This plan is for illustrative purposes only and should be used as such by any prospective purchaser. The services, systems and appliances shown have not been tested and no guarantee as to their operability or efficiency can be given.

Made with Metropix ©2017

**IMPORTANT NOTE:** These particulars and the descriptions and measurements herein do not constitute representation and whilst every effort has been made to ensure accuracy, this cannot be guaranteed.

