





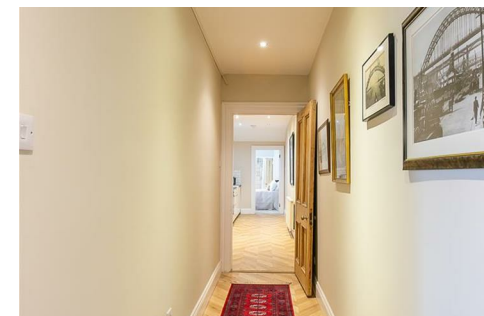
**\*\*AVAILABLE NOVEMBER 2025\*\***

**\*\*FURNISHED\*\*** An absolutely stunning lower ground floor conversion apartment situated in the heart of Jesmond's Brandling Villas on Burdon Terrace. Boasting two bedrooms, two bathrooms, lounge/ diner and a private rear yard. A real executive standard property not to be missed!

Smart and stylish throughout, the property briefly comprises an entrance porch with storage cupboard. A master double bedroom to the front with bay window. Next to it as a plush re-fitted bathroom WC. An internal hallway leads to a re-fitted modern kitchen, galley style, open to a large lounge/ diner with feature fireplace. There is a second double bedroom to the rear of the property, which also benefits from a shower room en suite. Finally there is a private yard which can be accessed from both the lounge and bedroom two, providing ideal outside space.

The property is available on a furnished basis and would be ideal a single occupant or professional couple.

Available 3rd November 2025 | £1,600pcm | Lower Ground Floor Conversion Apartment | 939 Sq. ft (87.2 m2) | Two Double Bedrooms | Bathroom & Shower Room En Suite | Lounge/ Diner | Modern Kitchen | Private Rear Yard | Permit Parking | Furnished | GCH & Part DG | Council Tax Band: C | EPC Rating: C



TOTAL APPROX. FLOOR AREA 939 SQ.FT. (87.2 SQ.M.)

Whilst every attempt has been made to ensure the accuracy of the floor plan contained here, measurements of doors, windows, rooms and any other items are approximate and no responsibility is taken for any error, omission, or mis-statement. This plan is for illustrative purposes only and should be used as such by any prospective purchaser. The services, systems and appliances shown have not been tested and no guarantee as to their operability or efficiency can be given.  
Made with Metropix ©2017

**£1,600 PCM**

**IMPORTANT NOTE:** These particulars and the descriptions and measurements herein do not constitute representation and whilst every effort has been made to ensure accuracy, this cannot be guaranteed.

