



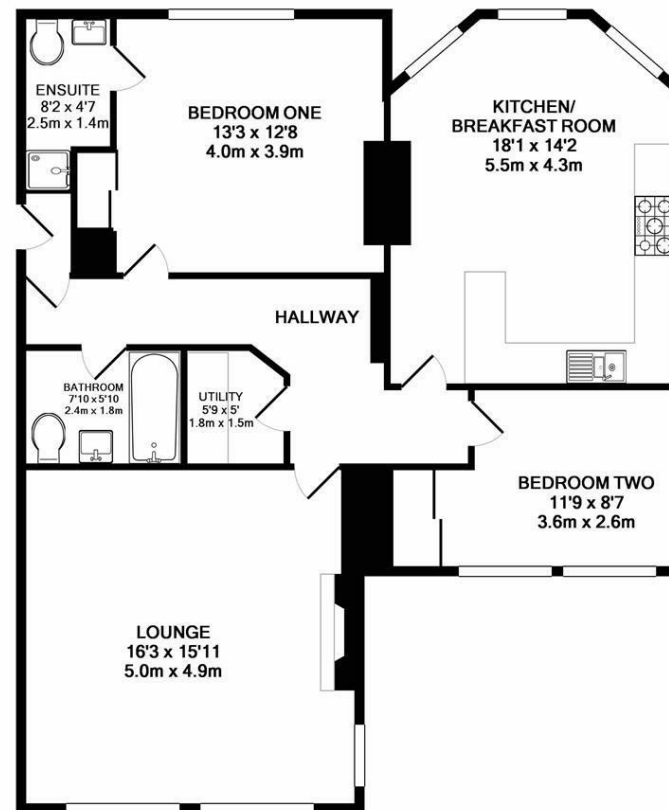


**\*\*AVAILABLE OCTOBER 2025\*\***

**\*\*STUNNING FIRST FLOOR CONVERSION APARTMENT\*\* \*\*FURNISHED\*\*** Found on one of Jesmond's most sought after streets, Akenside Terrace, this property situated in Harrison Lodge and is superbly presented, boasting large reception rooms, stylish furniture, plush bathrooms and gated off street parking to the rear.

Accessed via secure entry phone the accommodation briefly comprises a well kept communal hallway; an entrance porch, large lounge to the front with feature fireplace and a pleasant outlook. There is a large breakfasting kitchen to the rear with bay window and integrated appliances. There are two double bedrooms, both with fitted wardrobe space and the master with an en suite shower room. There is a plush family bathroom WC as well as a separate utility room. Externally there is gated off street residents parking to the rear, as well as on street permit parking to the front. Fully furnished throughout, perfect for a professional couple or sharers alike!

Available 31st October 2025 | £1,550pcm | First Floor Conversion Apartment | 999 Sq. ft (92.8 m2) | Two Double Bedrooms | 16ft Lounge | Spacious Breakfasting Kitchen | Bathroom WC | En Suite Shower Room | Furnished | Gated Off Street Parking | Leafy Outlook | Great location | GCH & DG | Council Tax Band: C | EPC Rating: D



TOTAL APPROX. FLOOR AREA 999 SQ.FT. (92.8 SQ.M.)

Whilst every attempt has been made to ensure the accuracy of the floor plan contained here, measurements of doors, windows, rooms and any other items are approximate and no responsibility is taken for any error, omission, or mis-statement. This plan is for illustrative purposes only and should be used as such by any prospective purchaser. The services, systems and appliances shown have not been tested and no guarantee as to their operability or efficiency can be given  
Made with Metropix ©2017

**£1,550 PCM**

**IMPORTANT NOTE:** These particulars and the descriptions and measurements herein do not constitute representation and whilst every effort has been made to ensure accuracy, this cannot be guaranteed.

