



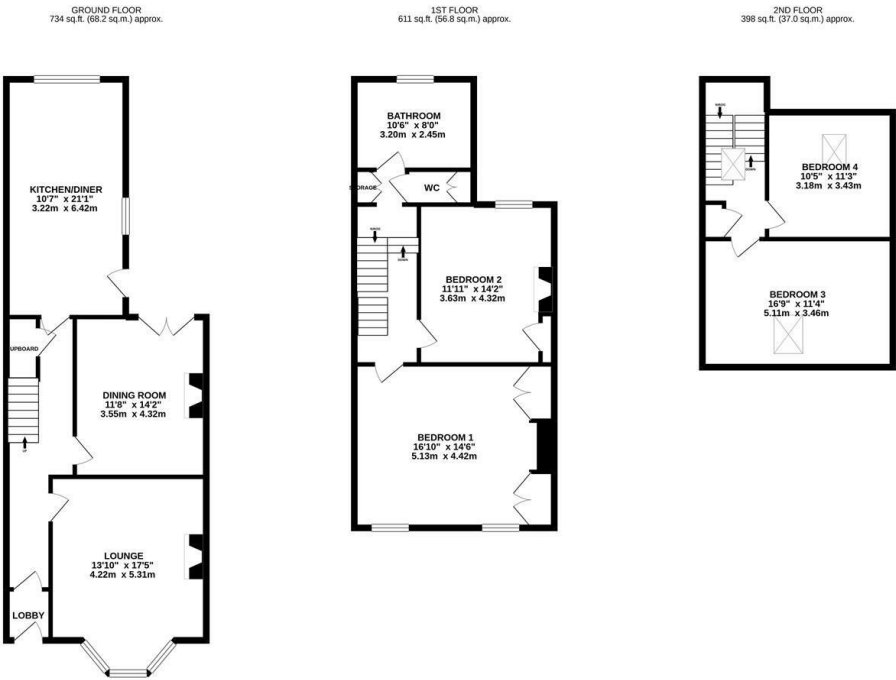
Well presented and retaining a wealth of period charm, a purpose built three-storey Victorian terrace, ideally located on Holly Avenue, Jesmond. Holly Avenue, a no-through road, is ideally placed to give access to excellent local schooling, the shops, cafés and restaurants of Jesmond as well as transport links into the city and further afield with Jesmond Metro Station only a short walk away.

Boasting close to 1,750 Sq ft, the accommodation briefly comprises: entrance lobby through to entrance hall with under-stairs cupboard and stairs to the first floor; lounge with period fireplace and feature wood burning stove, walk-in bay, ornate cornice and decorative ceiling rose; dining room again with period fireplace and French doors leading out to the rear yard; 21ft kitchen dining room, with a variety of wall and base units together with work surfaces and a door leading out to the rear yard. The first floor offers an impressive 16ft full width bedroom with ornate cornice and decorative ceiling rose, fitted storage and with two windows providing plentiful light; bedroom two with fitted storage and to the rear the family bathroom with four piece suite and separate W/C parallel to fitted storage cupboard. The staircase continues to the second floor landing with storage, with two further bedrooms, the larger measuring close to 17ft. Externally, a town garden to the front and a south-backing rear courtyard providing access to the rear service lane. With period features and gas central heating system this is a great opportunity not to be missed!

Three Storey Victorian Terrace | 1,744 Sq ft (162.0m2) | Four Bedrooms | Kitchen/Dining Room | Two Receptions | Impressive Full-Width Bedroom | Family Bathroom & W/C | Courtyard | Great Location | Period Features | GCH | Freehold | Council Tax Band | EPC Rating: D

EPC- D

Offers Over £500,000



IMPORTANT NOTE: These particulars and the descriptions and measurements herein do not constitute representation and whilst every effort has been made to ensure accuracy, this cannot be guaranteed.

