

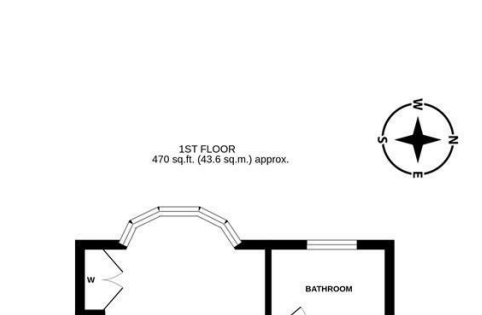






GARAGE  
156 sq. ft. (14.5 sq. m.) approx.

GARAGE  
15'8" x 7'11"  
5.99m x 2.41m

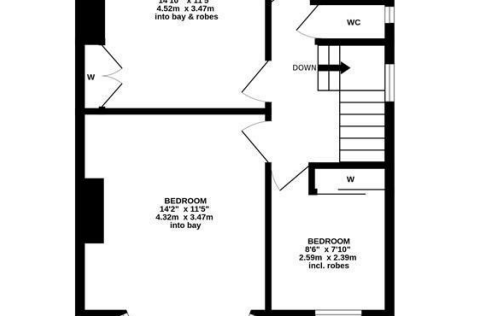


GROUND FLOOR  
551 sq.ft. (51.2 sq.m.) approx.

KITCHEN/DINER  
39'2" max x 14'3" max  
5,54m max x 4,34m max  
into bay

UTILITY  
10'5" x 4'11"  
3,10m x 1,31m

C



**SITTING ROOM**  
17'1" x 13'7"  
5.24m x 4.01m  
into bay & alcove

**PORCH**

**up**

**C**



and | Newcastle upon Tyne | NE2 2DN

## Offers Over £335,000

naea | propertymark  
PROTECTED

arla | propertymark  
PROTECTED

 The Property Ombudsman