



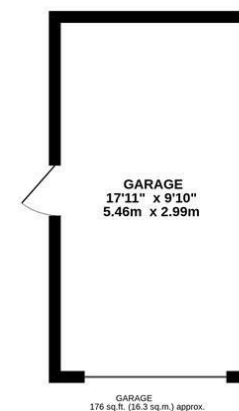
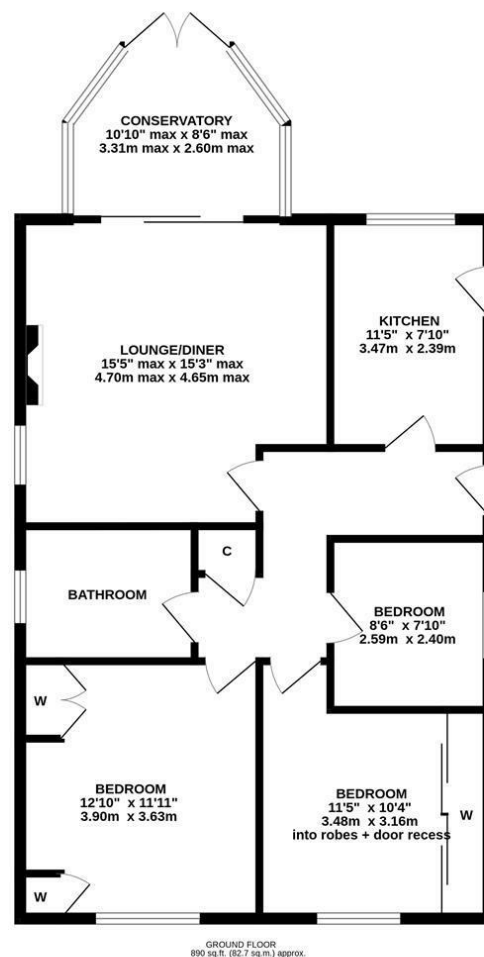
DETACHED BUNGALOW with DELIGHTFUL WRAP AROUND GARDENS a DETACHED GARAGE, DRIVEWAY and NO ONWARD CHAIN! This three bedroom detached bungalow is ideally located on Broadwell Court, South Gosforth. Broadwell Court, a quiet cul-de-sac tucked just off Daylesford Drive, is ideally situated close to excellent local schooling and is a stones throw from the Freeman Hospital, Paddy Freemans' park and Jesmond Dene. There are excellent transport links on Freeman Road and South Gosforth Metro Station is only a short walk away.

The accommodation briefly comprises: entrance hall with storage cupboard; lounge diner with feature fireplace and sliding door access to the conservatory; kitchen with fitted units, work surfaces and side door access to the driveway; conservatory with French doors leading out to the rear garden; bathroom complete with three piece suite; three bedrooms, bedrooms one and two both comfortable doubles with fitted storage.

Externally, delightful and well manicured wrap around gardens, to front, side and rear, laid mainly to lawn with a mixture of mature planting, a rear patio seating area, a multi-vehicle driveway and a detached garage measuring close to 18ft. With no onward chain, early viewings are essential to avoid disappointment.

Detached Bungalow | Three Bedrooms | 1,065 Sq ft (99.0m²) | Lounge Diner | Conservatory | Bathroom | Kitchen | Detached Garage & Driveway | Wrap Around Gardens | Quiet Cul-De-Sac Location | No Onward Chain | Freehold | Council Tax Band D | EPC: D

Offers Over £295,000



TOTAL FLOOR AREA: 1065 sq.ft. (99.0 sq.m.) approx.
Whilst every attempt has been made to ensure the accuracy of the floorplan contained here, measurements of doors, windows, rooms and any other items are approximate and no responsibility is taken for any error, omission or mis-statement. This plan is for illustrative purposes only and should be used as such by any prospective purchaser. The services, systems and appliances shown have not been tested and no guarantee as to their operability or efficiency can be given.
Made with Metropix 5/2025

IMPORTANT NOTE: These particulars and the descriptions and measurements herein do not constitute representation and whilst every effort has been made to ensure accuracy, this cannot be guaranteed.

