

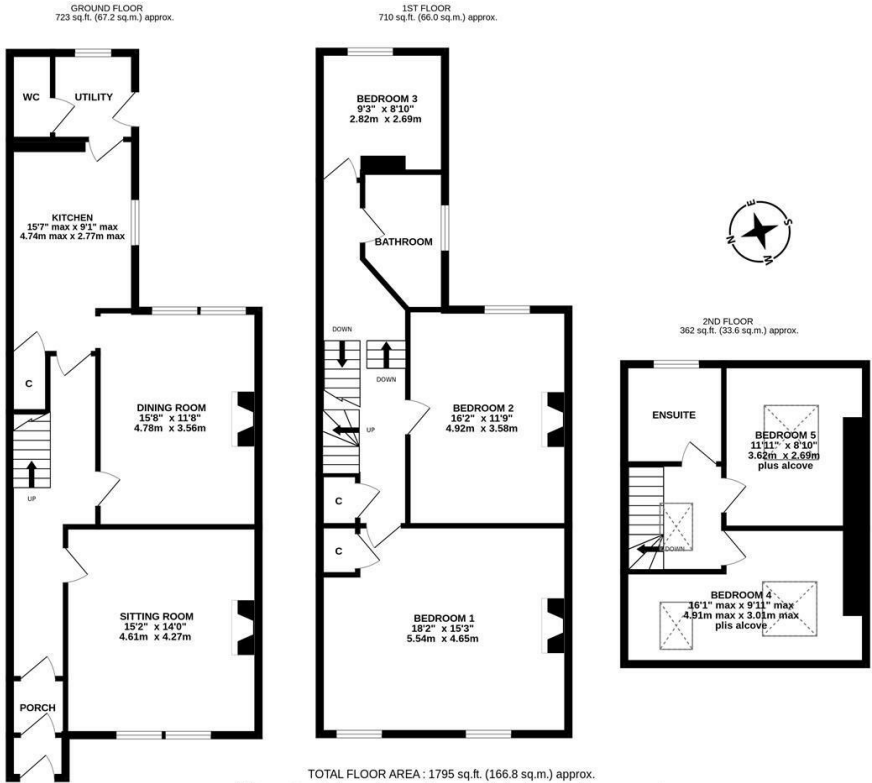


With Period Features Throughout! This delightful Victorian family home is ideally located on Windsor Terrace, South Gosforth. Windsor Terrace, a stone's throw from outstanding local schooling, is perfectly placed to give easy access to Gosforth High Street, with its cafés, shops and restaurants and South Gosforth Metro Station only seconds away providing links into Newcastle City Centre and beyond.

Boasting over 1,900 Sq ft over three floors, the accommodation briefly comprises: entrance lobby to entrance porch; hallway with stairs to first floor; sitting room with feature fireplace, decorative ceiling rose, ornate cornice and dual west facing windows; dining room with stripped wood flooring and feature fireplace, open to kitchen with fitted units, work surfaces, under-stairs storage cupboard and tiled flooring; utility room with side door access and separate downstairs WC. The split level first floor landing with storage cupboard gives access to; bedroom one, an impressive full-width room measuring 18ft, with feature fireplace and dual west facing windows; bedroom two, a further comfortable with feature fireplace; bedroom three; bathroom with three piece suite. The second floor landing gives access to a further two bedrooms both with Velux windows; en-suite complete with three piece suite. Externally, a west facing front town garden, laid mainly to gravel with a raised patio seating area. To the rear, an enclosed yard, fully paved with wall boundaries and gated access to the rear service lane. With a wealth of period charm, early viewings are advised!

Victorian Mid-Terrace Family Home | Five Bedrooms | 1,795 Sq ft (166.8m2) | Sitting Room | Dining Room | Kitchen | Utility Room | Downstairs WC | Family Bathroom | En-Suite Shower Room | West Facing Front Town Garden | Enclosed Rear Yard | Great Location | Freehold | Council Tax Band C | EPC: D

EPC - D



Offers Over £450,000

IMPORTANT NOTE: These particulars and the descriptions and measurements herein do not constitute representation and whilst every effort has been made to ensure accuracy, this cannot be guaranteed.

