





# The Red House, 47 Clayton Road, Jesmond, Newcastle upon Tyne, Tyne & Wear, NE2 4RQ

Thought to have been originally constructed circa 1908 and located in the heart of Brandling Village Conservation Area, this substantial and stylish family home is one of only a handful of examples of 'Arts and Crafts' inspired Edwardian architecture in the city. Ideally located in the heart of Brandling Village Conservation Area, close to excellent local schools, the shops of Clayton Road, Jesmond Metro Station and a short walk to Newcastle City Centre, the RVI and Newcastle's universities.

Boasting an impressive 4,345 Sq ft over four floors and having undergone refurbishment and transformation by the current owner, the accommodation briefly comprises: entrance hall through to hallway with stairs to first floor and feature fireplace; sitting room with walk in bay and feature fireplace; drawing room again with walk in bay and feature fireplace; office with walk in bay and feature fireplace; super stylish kitchen diner measuring 23ft, with six sky lights, a range of bespoke fitted units, work surfaces, breakfasting island, integrated appliances, wood burning stove, feature glass floor and tiling; utility room with separate WC; integral garage with sky light. The first floor landing gives access to; three double bedrooms, all with walk in bay windows, bedroom one with en-suite shower room and bedroom three with feature fireplace; family bathroom complete with four piece suite including a free standing bath and step in shower. The second floor landing with sky lighting gives access to; a further three double bedrooms, bedroom

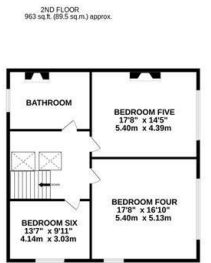
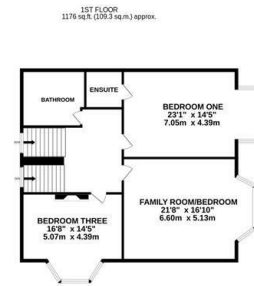
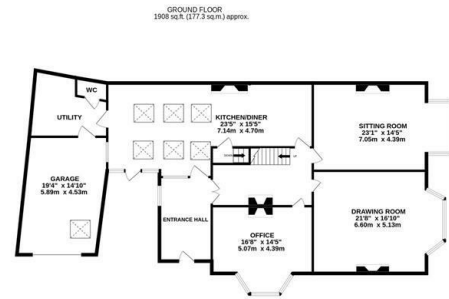
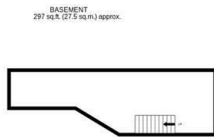
four with dual aspect windows and bedroom five with feature fireplace; bathroom, again with four piece suite including a free standing bath and step in shower. To the lower ground floor, a fully tanked basement level measuring 297 Sq ft providing excellent storage.

Externally, a delightful lawned, wrap around garden, a driveway providing multi-vehicle off-street parking leading on to the garage, providing further off-street parking/storage. Rare to the market, this must see property simply demands an internal inspection!

Substantial & Stylish Family Home | Six Bedrooms | 4,345 Sq ft (403.6m<sup>2</sup>) | Sitting Room | Drawing Room | 23ft Kitchen Diner | Utility Room with Separate WC | Office | 1st Floor Family Bathroom & En-Suite | 2nd Floor Bathroom | Garage | Delightful Lawned Wrap Around Gardens | Multi-Vehicle Driveway | Conservation Area | GCH | Freehold | Council Tax Band | EPC: Tbc

**Offers Over £895,000**





**TOTAL FLOOR AREA : 4345 sq.ft. (403.6 sq.m.) approx.**

Whilst every attempt has been made to ensure the accuracy of the floorplan contained here, measurements of doors, windows, rooms and any other items are approximate and no responsibility is taken for any error, omission or mis-statement. This plan is for illustrative purposes only and should be used as such by any prospective purchaser. The services, systems and appliances shown have not been tested and no guarantee as to their operability or efficiency can be given.  
Made with Metropix ©2025



**IMPORTANT NOTE:** These particulars and the descriptions and measurements herein do not constitute representation and whilst every effort has been made to ensure accuracy, this cannot be guaranteed.





