

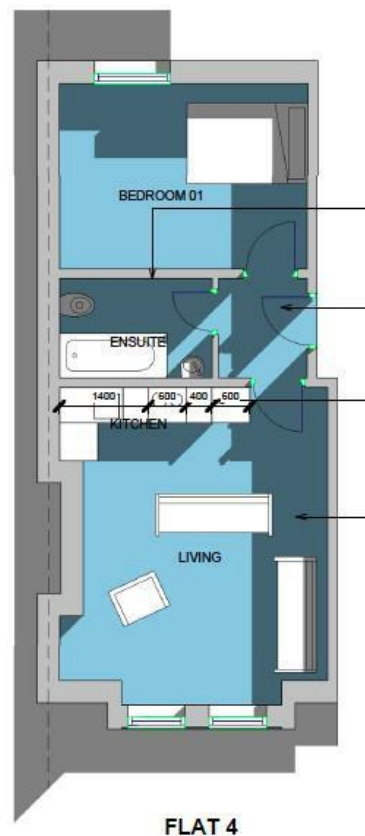




**\*\*AVAILABLE JULY\*\* \*\*ONE BEDROOM APARTMENT\*\* \*\*FURNISHED\*\*** A well presented and spacious one bed apartment, ideally located on Grosvenor Place, within a stone's throw of the amenities of Jesmond. A communal garden leads to the proud entrance with staircase to the first floor landing.

The private accommodation briefly comprises entrance area with secure entry phone which leads to open-plan lounge/kitchen with refitted kitchen and integrated appliances, refitted bathroom and double bedroom. With laminate flooring, gas central heating and double glazing, this great apartment requires an early inspection.

Available 1st July | £950pcm | First Floor Apartment | Furnished | Modern & Well Presented Throughout | One Double Bedroom | Open Plan Lounge/ Kitchen | Stylish Re-Fitted Bathroom WC | Great Location | Rear Yard | GCH & DG | Council Tax Band: A | EPC Rating: C



FLAT 4

PROPOSED FLAT 4  
1 : 50

**£950 PCM**

**IMPORTANT NOTE:** These particulars and the descriptions and measurements herein do not constitute representation and whilst every effort has been made to ensure accuracy, this cannot be guaranteed.

