

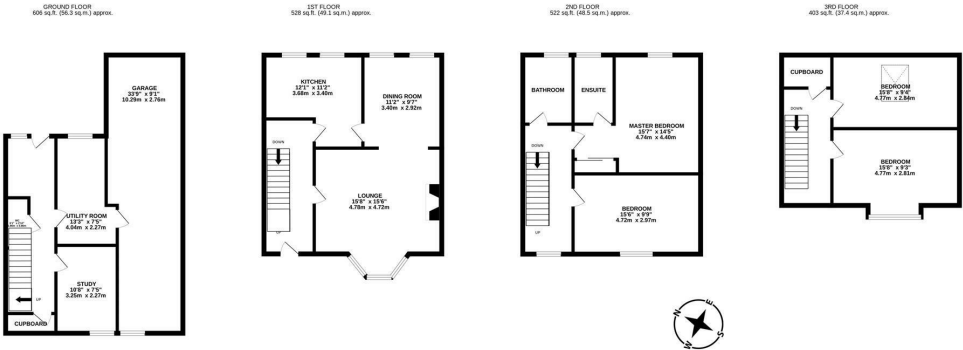


With a pleasant outlook and close to the Freeman Hospital, a four-storey townhouse, ideally located at Castledene Court, South Gosforth. Originally constructed in 1991, Castledene Court is conveniently situated to give access to the Freeman Hospital, South Gosforth Metro Station, the greenery provided by Paddy Freeman’s Park and provides excellent road links to the City and beyond.

With no onward chain, the accommodation briefly comprises: entrance hall with stairs to first floor, under-stairs WC and storage cupboard; utility room; study; integral garage measuring 33ft. The first floor landing gives access to; lounge with feature fireplace and walk in bay, open to dining room; kitchen with fitted units and work surfaces. The second floor landing gives access to; bedroom one with sliding door wardrobe storage and access to an en-suite shower room; bedroom two; bathroom complete with three piece suite. To the third floor, Eaves storage and a further two bedrooms, both of which are comfortable doubles, bedroom four with dormer window and bedroom five with sky light.

Externally, an enclosed garden laid mainly to lawn with a mixture of planting and a block paved driveway providing off-street parking leading to the garage. Offered to the market with no onward chain, early viewings are advised!

Four Storey Townhouse | Four Bedrooms | 2,067 Sq ft (192.0m2) | Utility Room | Downstairs WC | Study | Kitchen | Lounge to Dining Room | Family Bathroom & En-Suite Shower Room | 33ft Integral Garage | Enclosed Garden | No Onward Chain | Freehold | Council Tax Band E | EPC: D



Offers Over £365,000

IMPORTANT NOTE: These particulars and the descriptions and measurements herein do not constitute representation and whilst every effort has been made to ensure accuracy, this cannot be guaranteed.

