



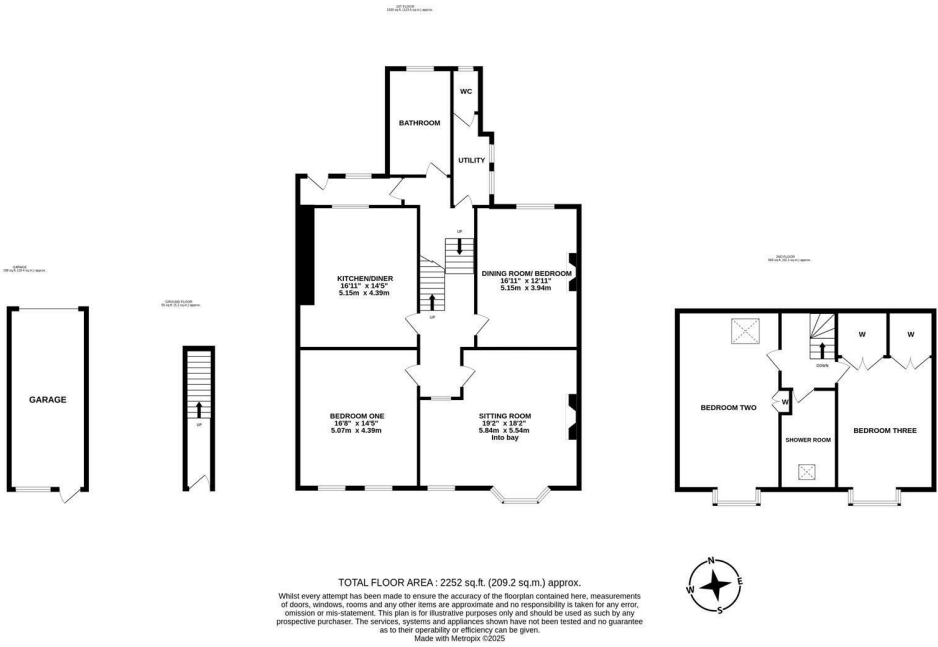
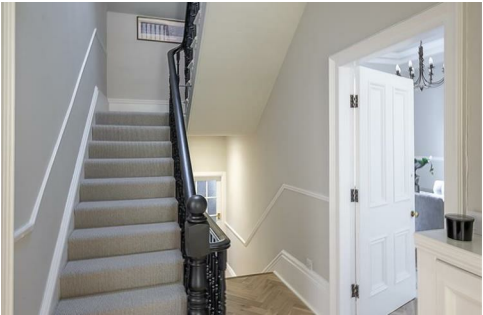


STYLISH MAISONETTE with THREE DOUBLE BEDROOMS, 19ft SITTING ROOM and a GARAGE! Set back from the main road, a stylish and spacious conversion apartment located on the first and second floors of this imposing double fronted Victorian townhouse, perfectly positioned on Osborne Avenue, Jesmond. Within walking distance to the cafés and shops of Clayton Road, Acorn Road, Jesmond Dene and close to Newcastle City Centre itself, Osborne Avenue, a pretty tree lined street is well located within close proximity to all Jesmond has to offer.

Boasting over 2,200 Sq ft, the accommodation briefly comprises: entrance hall with stairs to first floor landing; sitting room with walk in bay, feature fireplace and Parquet flooring; dining room/bedroom with feature fireplace and Parquet flooring; kitchen diner with a range of fitted units, work surfaces, breakfasting island, some integrated appliances, tiled flooring and spot lighting; bedroom one with dual windows, feature fireplace and Parquet flooring; rear hallway; utility room with dual windows and separate WC; bathroom complete with four piece suite and spot lighting. The second floor landing gives access to; two double bedrooms, both with dormer windows and fitted wardrobe storage; shower room complete with three piece suite and spot lighting.

Externally, a gravelled communal garden to the front and to the rear, an enclosed yard giving access to the garage providing off-street parking/storage. A great apartment that demands an internal inspection!

Super Stylish Maisonette | 2,252 Sq ft (209.2m2) | Three Double Bedrooms | 19ft Sitting Room | Kitchen Diner | Bathroom & Shower Room | Utility with WC | Gravelled Communal Front Garden | Rear Yard with Garage | Central Jesmond Location | Leasehold - 967 Years Remaining | Service Charge Ad-Hoc | Council Tax Band E | EPC: E



Offers Over £450,000

**IMPORTANT NOTE:** These particulars and the descriptions and measurements herein do not constitute representation and whilst every effort has been made to ensure accuracy, this cannot be guaranteed.

