

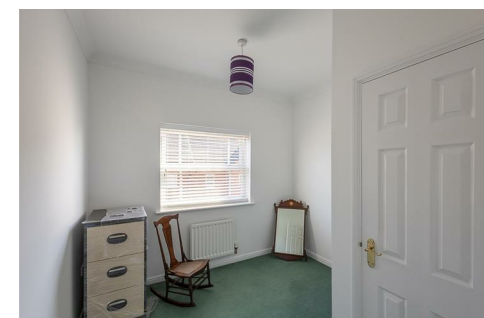
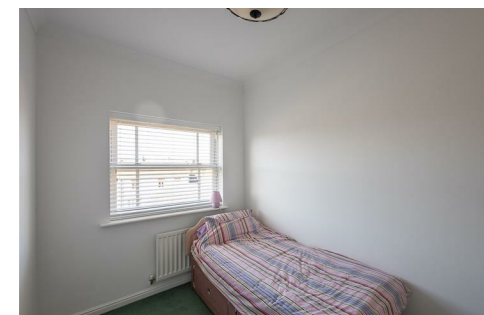
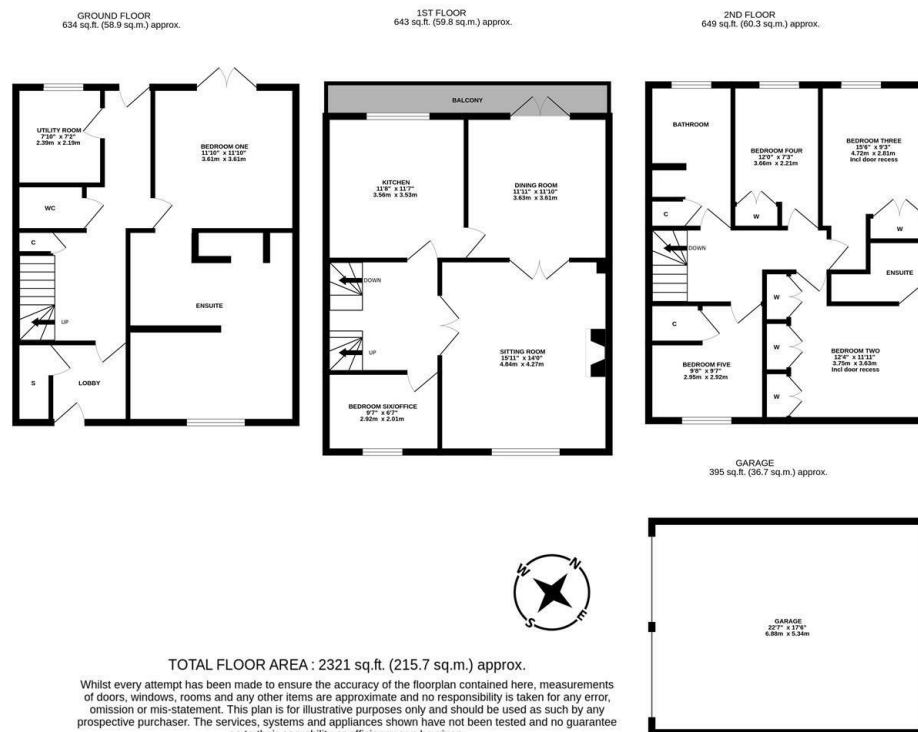


This three storey townhouse is ideally located on Featherstone Grove, within Great Park, Gosforth. Close to excellent local schools, Featherstone Grove is conveniently situated close to the local shops, public transport links, access to the A1 western bypass and the shopping of Gosforth High Street.

The accommodation briefly comprises: entrance lobby with storage cupboard, through to entrance hall with stairs to first floor and under-stairs storage cupboard; downstairs WC' utility room; rear door access to the garden; principle bedroom with French doors leading out to the rear garden and furthermore open to a generous en-suite bathroom complete with four piece suite including a free standing roll top bath, separate walk in shower area, spot lighting and both Travertine and Metro tiling. The first floor landing gives access to; sitting room with fireplace; dining room with French doors leading out to a full-width balcony; kitchen with fitted units and work surfaces; bedroom six/office. To the second floor; a further four bedrooms, all with fitted storage and bedroom two also with an en-suite shower room; family bathroom.

Externally, a front two garden with both a railing and hedge boundary and to the rear, an enclosed north-west facing garden laid mainly to gravel with a mixture of mature planting and two paved patio seating areas, furthermore a detached double garage measuring 22ft providing off-street parking/storage.

Three Storey Townhouse | Five/Six Bedrooms | 2,321 Sq ft (215.7m<sup>2</sup>) | Sitting Room | Dining Room | Balcony | Kitchen | Principle with En-Suite Bathroom | Utility Room | Downstairs WC | Family Bathroom | En-Suite to Bedroom Two | Front Town Garden & Enclosed Rear Garden | Detached 22ft Garage | Freehold | Council Tax Band F | EPC: C



**Offers Over £365,000**

**IMPORTANT NOTE:** These particulars and the descriptions and measurements herein do not constitute representation and whilst every effort has been made to ensure accuracy, this cannot be guaranteed.

