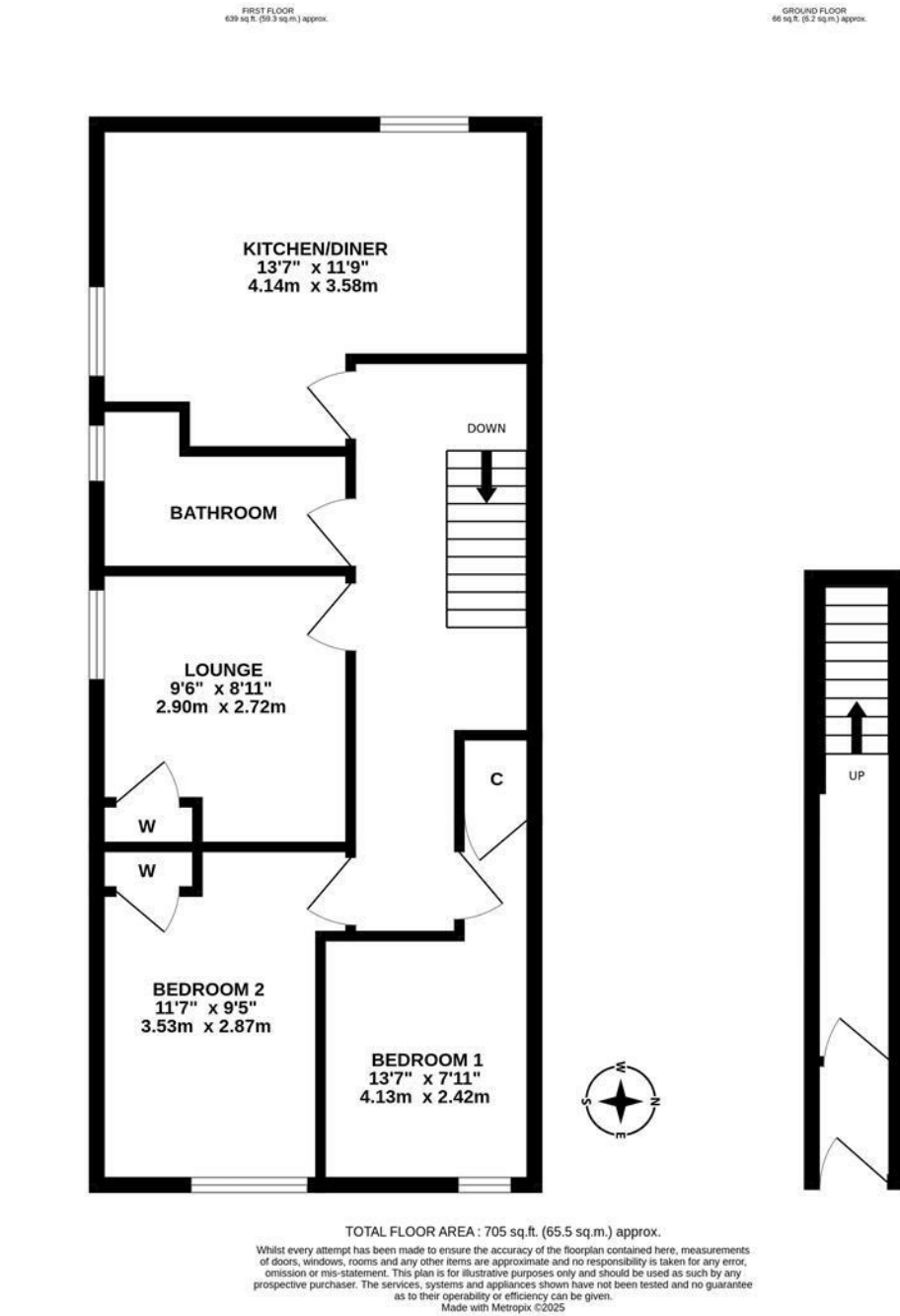




UPPER FLOOR FLAT - NO ONWARD CHAIN! Priced to reflect cosmetic refurbishment, this two bedroom upper floor flat is ideally located on the corner of both Addycombe Terrace and Warton Terrace, Heaton. Close to Chillingham Road, Addycombe Terrace, is conveniently situated just a short stroll to the shops, cafes and restaurants as well as excellent transport links into the city and beyond.

The accommodation briefly comprises: entrance lobby through to entrance hall with stairs to first floor landing; kitchen diner; lounge with fitted storage; bathroom; two bedrooms, both with storage cupboards. Externally, a front and side town garden laid mainly to paving with railing boundary. With no onward chain, early viewings are advised.

Upper Floor Flat | 705 Sq ft (65.5m2) | Two Bedrooms | Lounge | Kitchen Diner | Bathroom | Front & Side Town Garden | No Onward Chain | Leasehold - Tyneside Lease | Council Tax Band A | EPC: D



Offers Over £115,000

**IMPORTANT NOTE:** These particulars and the descriptions and measurements herein do not constitute representation and whilst every effort has been made to ensure accuracy, this cannot be guaranteed.

