





VICTORIAN TERRACE with PERIOD FEATURES & NO ONWARD CHAIN! Priced to reflect full refurbishment, this Victorian mid terrace is ideally located on Larkspur Terrace, Jesmond. This great family home manages to retain fine features associated with the period and also benefits from a front garden and private rear courtyard. Ideally located within Jesmond, Larkspur Terrace, a stone's throw from Acorn Road, excellent local schooling, countless great shops and restaurants, West Jesmond Metro station and indeed Newcastle City Centre itself.

The accommodation briefly comprises: entrance lobby through to entrance hall with stairs to first floor; sitting room with walk in bay, fireplace, ornate cornice and decorative ceiling rose; dining room with feature fireplace and part alcove storage; 28ft kitchen with fitted units, work surfaces, under-stairs storage, dual windows and side door access to the yard. The split level first floor landing gives access to; two bedrooms, bedroom one a full-width room measuring 18ft with feature fireplace; bathroom with separate WC and storage. To the second floor, a 19ft storage space with two sky lights (light storage only).

Externally, a mature front town garden and an enclosed yard. Offered to the market with no onward chain, early viewings are essential.

Victorian Mid-Terrace | Two Bedrooms | Sitting Room | Dining Room | 23ft Kitchen | Bathroom with Separate WC | 19ft Loft Storage Room (light storage only) | Mature Front Town Garden & Enclosed Yard | Excellent Location | Price to Reflect Full Refurbishment | Freehold | No Onward Chain | Council Tax Band E | EPC: Tbc

**Offers Over £400,000**

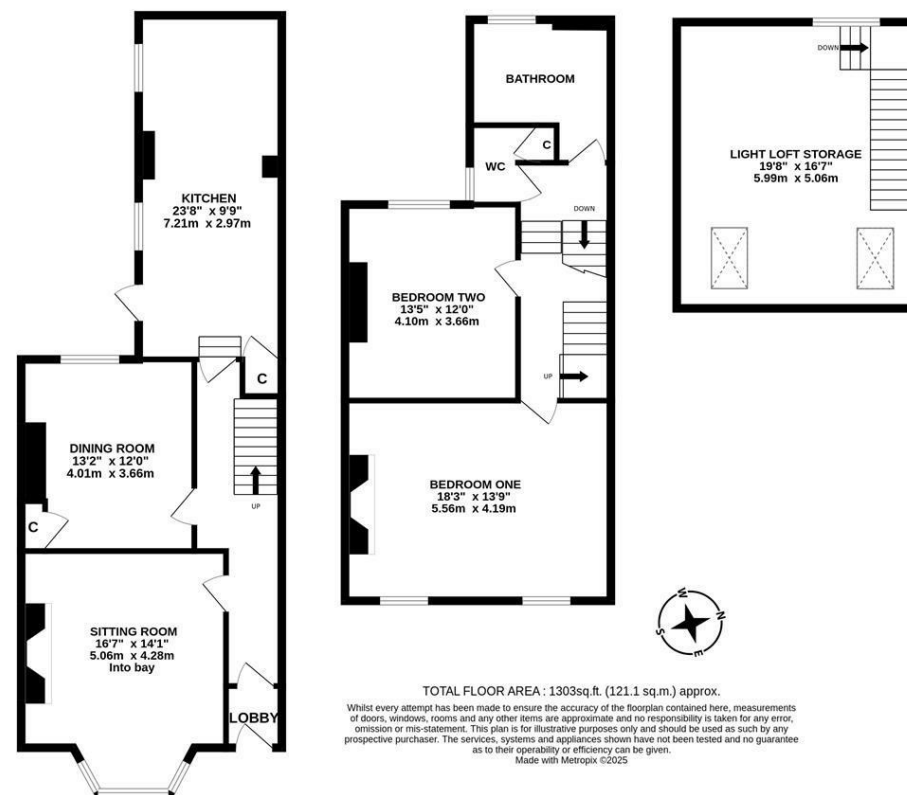


GROUND FLOOR  
705 sq.ft. (65.5 sq.m.) approx.



1ST FLOOR  
598 sq.ft. (55.6 sq.m.) approx.

LOFT  
326 sq.ft. (30.3 sq.m.) approx.



**IMPORTANT NOTE:** These particulars and the descriptions and measurements herein do not constitute representation and whilst every effort has been made to ensure accuracy, this cannot be guaranteed.

