

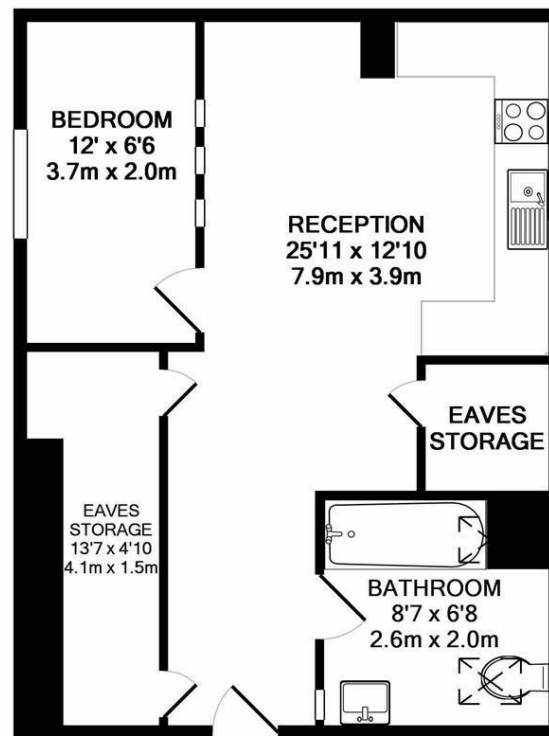


**\*\*AVAILABLE IMMEDIATELY\*\* \*\*ONE BEDROOM FLAT\*\* \*\*FURNISHED\*\*** A smart top floor one bedroom apartment, conveniently located close several shops and transport links. With a fabulous open-plan reception, spacious double bedroom and plush refitted bathroom, this property will make a great home for either a single occupant or professional couple.



The accommodation briefly comprises a communal entrance hallway with stairs to the second floor. The apartment itself has a spacious open-plan reception, a lounge area and modern fitted kitchen with splash back tiles and appliances. There is a plush bathroom WC also with washing machine installed, as well as plenty of eaves storage space. Fully furnished, with double glazed windows and gas central heating.

Available Immediately | £850pcm | Second Floor Apartment | Furnished | 476 Sq. ft (44.2 m2) | Open Plan Reception | Modern Fitted Kitchen | One Double Bedroom | Bathroom WC | Modern Style | Excellent Location | Eaves Storage Space | Close To Transport Links | Walking Distance To Several Shops | DG & GCH | Council Tax Band: A | EPC Rating: C



TOTAL APPROX. FLOOR AREA 476 SQ.FT. (44.2 SQ.M.)

Whilst every attempt has been made to ensure the accuracy of the floor plan contained here, measurements of doors, windows, rooms and any other items are approximate and no responsibility is taken for any error, omission, or mis-statement. This plan is for illustrative purposes only and should be used as such by any prospective purchaser. The services, systems and appliances shown have not been tested and no guarantee as to their operability or efficiency can be given  
Made with Metropix ©2018

**£850 PCM**

**IMPORTANT NOTE:** These particulars and the descriptions and measurements herein do not constitute representation and whilst every effort has been made to ensure accuracy, this cannot be guaranteed.

