

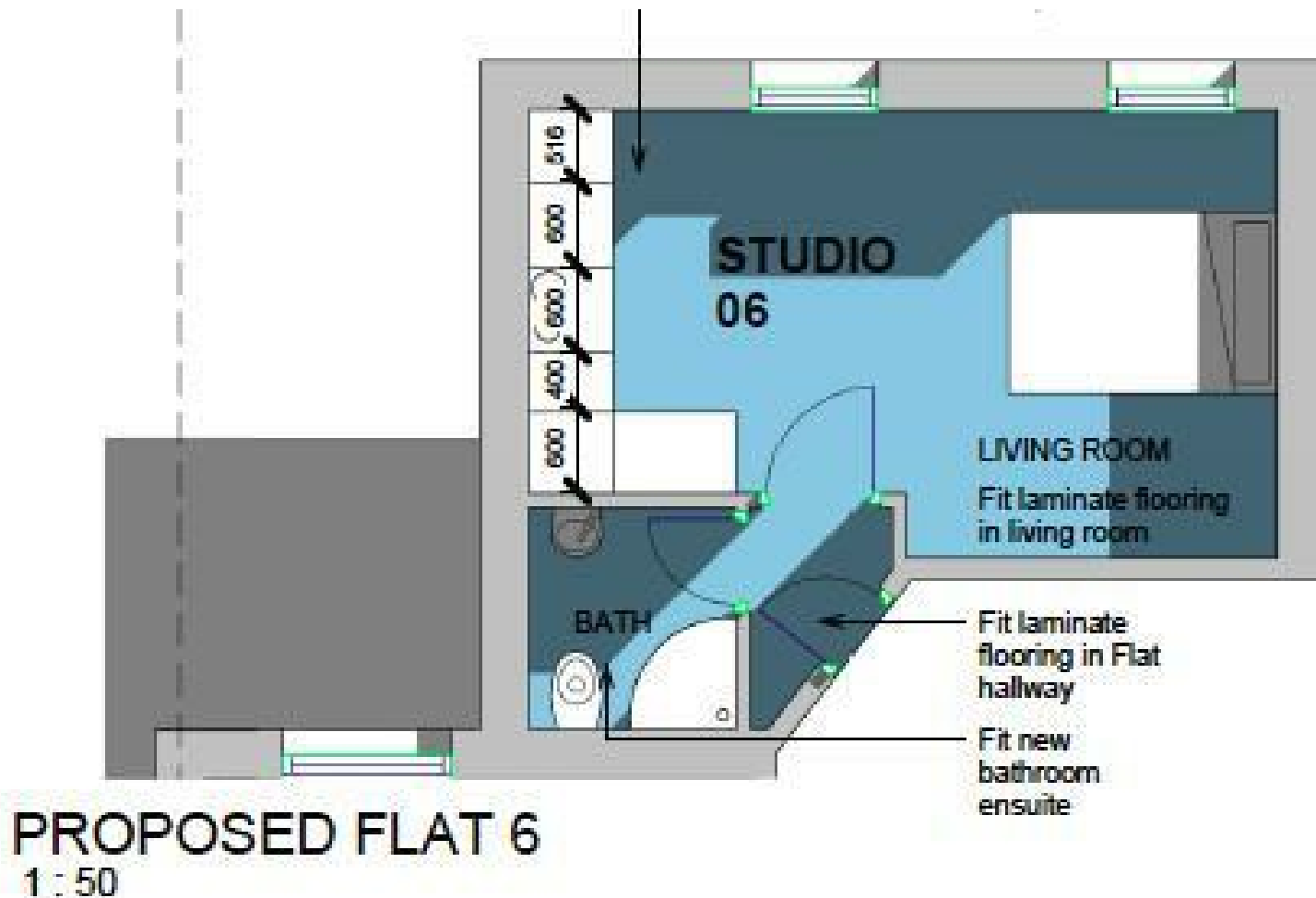


****AVAILABLE MAY 2025** **FURNISHED****

Situated on the first floor, well presented studio apartment, ideally located on Grosvenor Place within a stone's throw of the amenities of Jesmond.

A communal garden leads to the proud entrance with staircase to the first floor landing. The private accommodation briefly comprises entrance lobby with secure entry phone, modern shower room WC and an open plan lounge/bedroom to kitchen with with integrated appliances. With laminate flooring, double glazing and electric heating, this unique space is found in a brilliant location and is ideal for a professional or post-graduate occupant.

Available 1st May 2025 | £700pcm | Studio Apartment | One Bedroom Studio | Open Plan Reception | Shower Room WC | Communal Front Garden | Excellent Location | Communal Off Street Parking | Furnished | On Street Permit Parking Available | DG & Elec Heating | Council Tax Band: A | EPC Rating: E



£700 PCM

IMPORTANT NOTE: These particulars and the descriptions and measurements herein do not constitute representation and whilst every effort has been made to ensure accuracy, this cannot be guaranteed.

