



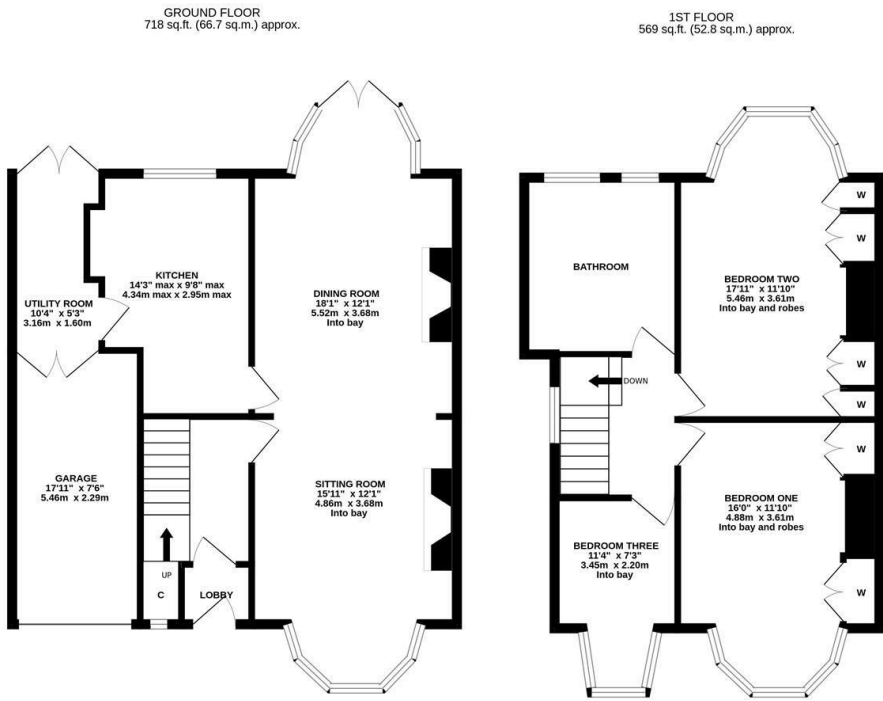


WELL PRESENTED SEMI-DETACHED FAMILY HOME WITH A SOUTH FACING REAR GARDEN!  
This three bedroom semi-detached family home ideally located on the south backing side of Southwood Gardens, Kenton. Situated close to excellent local schools, Southwood Gardens tucked behind Kenton Lane, provides perfect family accommodation with immediate access to the A1 western bypass and close to the cafés, restaurants and shops of Gosforth High Street.

Boasting almost 1,300 Sq ft, the accommodation briefly comprises: entrance lobby through to entrance hall with stairs to first floor and half landing storage cupboard; sitting room with walk in bay, feature wood burning stove and stripped wood flooring, open to dining room with walk in bay, feature fireplace and stripped wood flooring; kitchen with fitted units, hardwood work surfaces, some integrated appliances and Belfast sink unit; utility room with front and rear double door access to the rear garden and integral garage. The first floor landing gives access to; three bedrooms, all with walk in bays and bedrooms one and two both with fitted wardrobe storage; stylish family bathroom complete with four piece suite including a free standing bath, step in shower and spot lighting.

Externally to the front, a driveway providing off-street parking, leading to and lawned garden to the front, with a mixture of mature planting and a wall boundary. To the rear, a delightful south facing garden laid to both paving and artificial grass with a patio seating area, well stocked borders and both wall and fenced boundaries. Early viewings are advised to appreciate this great family home!

1930's Semi-Detached Family Home | Well Presented Throughout | 1,287 S1 ft (119.5m2) | Three Bedrooms | Sitting Room to Dining Room | Kitchen | Utility Room | Stylish Family Bathroom | Front Garden & Driveway | Garage | South Facing Rear Garden | GCH | Freehold | Council Tax Band C | EPC: D



Offers Over £325,000

IMPORTANT NOTE: These particulars and the descriptions and measurements herein do not constitute representation and whilst every effort has been made to ensure accuracy, this cannot be guaranteed.

