

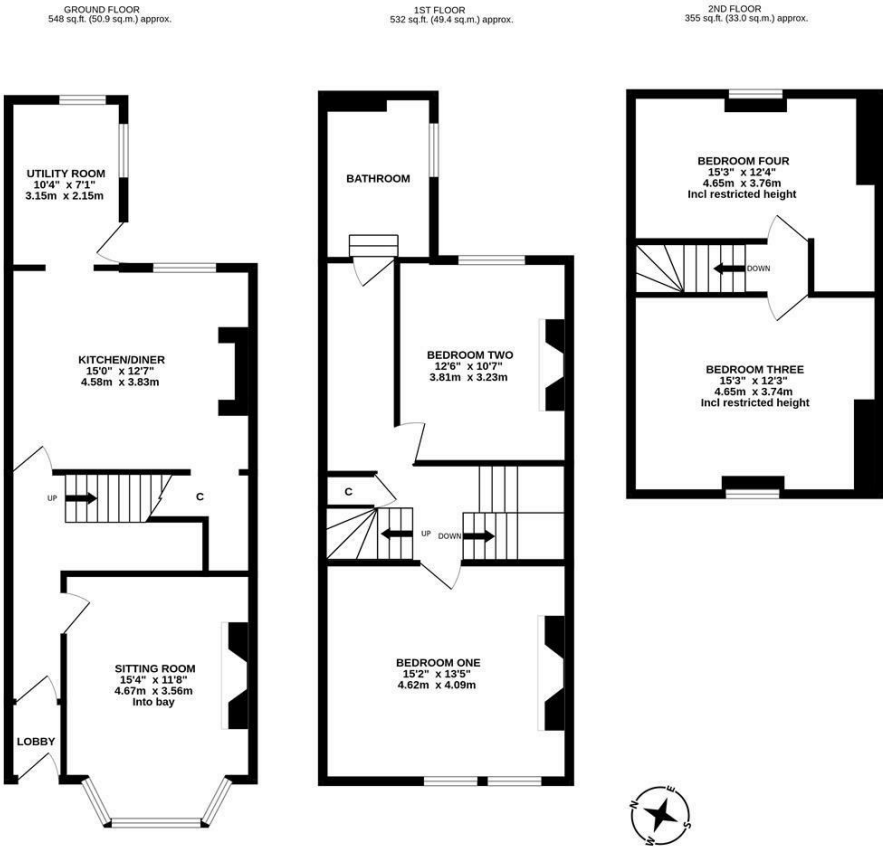


Retaining a wealth of period features and open aspect views over Oxnam Gardens allotments, a proud Victorian terrace ideally located on Oxnam Crescent, Spital Tongues. On the edge of the city, Oxnam Crescent is conveniently situated within walking distance to Newcastle City Centre, the RVI, Newcastle University and the dental hospital.

Set over three floors and boasting over 1,400 Sq ft, the accommodation briefly comprises: entrance lobby through to entrance hall with stairs to first floor; sitting room with walk in bay, painted wood flooring, feature fireplace and decorative ceiling; kitchen diner with under-stairs storage cupboard, painted wood flooring, kitchen area with fitted units, work surfaces and Belfast sink; utility room with fitted units, work surface, side door access to the yard and dual aspect windows. The first floor landing with storage cupboard gives access to; two double bedrooms; bedroom one a delightful full-width room measuring 15ft, with dual windows, feature fireplace, decorative ceiling and painted flooring, bedroom two with painted flooring and feature fireplace; family bathroom complete with four piece suite including a free standing roll top bath, spot lighting and painted wood flooring. To the second floor, a further two double bedrooms, both full-width rooms again measuring 15ft.

Externally, a south-west facing front town garden with dwarf wall boundary and to the rear, an enclosed yard, block paved with wall boundaries and gated access to the rear service lane. With gas 'combi' central heating and period features throughout, this great home demands an internal inspection.

Victorian Mid-Terrace | 1,435 (133.3m2) | Four Bedrooms | Sitting Room | Kitchen Diner | Utility Room | Bathroom with Four Piece Suite | Front Town Garden & Rear Yard | Open Aspect Views | Period Features | Great Location | Freehold | Council Tax Band C | EPC: D



Offers Over £300,000

**IMPORTANT NOTE:** These particulars and the descriptions and measurements herein do not constitute representation and whilst every effort has been made to ensure accuracy, this cannot be guaranteed.

