



No Onward Chain! This three storey Victorian mid-terrace is packed with period features, enjoys a private south facing courtyard and is tucked away on Springbank Road, Sandyford. Springbank Road, close to Jesmond Dene, is also close to the local shops, cafes and restaurants and indeed the cafe culture, nightlife of Jesmond and Newcastle City Centre which are both also only a short walk away.



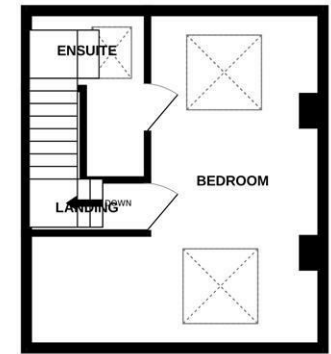
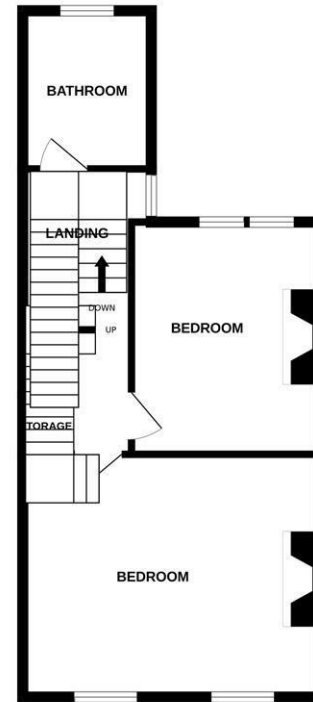
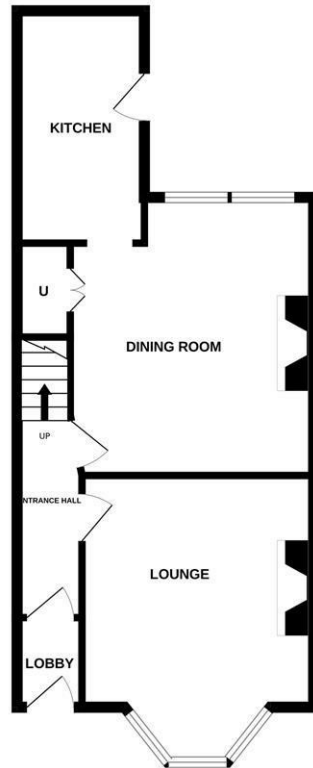
GROUND FLOOR
493 sq.ft. (45.8 sq.m.) approx.

1ST FLOOR
457 sq.ft. (42.5 sq.m.) approx.

2ND FLOOR
278 sq.ft. (25.9 sq.m.) approx.

Offering 1,260 Sq. Ft, the accommodation briefly comprises: entrance lobby through to entrance hall, lounge with walk-in bay window and period fireplace, dining room again with period fireplace and stripped wooden floors through to kitchen. The first floor boasts an impressive full-width master bedroom, second double bedroom and family bathroom. To the second floor a converted third bedroom with dual aspect Velux rooflights and en-suite shower room. With a wealth of period charm and a delightful south-backing courtyard, this great home demands an early inspection!

Three Storey Terrace | Three Double Bedrooms | 1260 Sq. Ft (117.1m²) | Lounge | Dining Room | Kitchen | Impressive Full-Width Master Bedroom | Bathroom & En-Suite Shower Room | South Facing Courtyard | Great Location | Period Features | No Onward Chain | Council Tax Band B | EPC Rating: D



TOTAL FLOOR AREA : 1228 sq.ft. (114.1 sq.m.) approx.

Whilst every attempt has been made to ensure the accuracy of the floorplan contained here, measurements of doors, windows, rooms and any other items are approximate and no responsibility is taken for any error, omission or mis-statement. This plan is for illustrative purposes only and should be used as such by any prospective purchaser. The services, systems and appliances shown have not been tested and no guarantee as to their operability or efficiency can be given.
Made with Metropix ©2024



Offers Over £265,000

IMPORTANT NOTE: These particulars and the descriptions and measurements herein do not constitute representation and whilst every effort has been made to ensure accuracy, this cannot be guaranteed.

