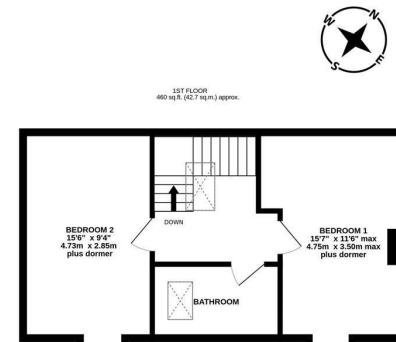
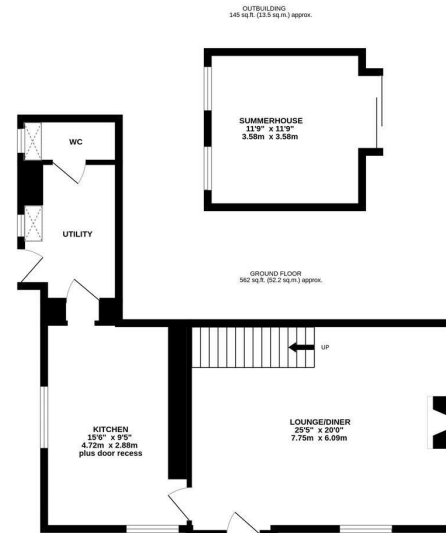




With No Onward Chain! This unique, detached, stone built cottage is ideally located on Kyo Lane, Greenside. Kyo Lane, leading from Lead Road provides excellent access to both Greenside Village along together with Garesfield Golf Club, beyond towards Rowlands Gill and furthermore on to Newcastle city centre

The accommodation briefly comprises: 25ft lounge diner with feature wood burning stove; kitchen with a range of fitted units together with work surfaces, spot lighting and dual windows; utility room with room with side door access; downstairs WC. The first floor landing with sky light gives access to; two double bedrooms, both measuring 15ft with dormer windows; bathroom complete with four piece suite and spot lighting. Externally, a paved driveway to the front offering multi-vehicle off-street parking; a generous lawned garden with fenced boundaries and a detached summerhouse with sliding door access and dual windows. Well presented throughout, this great property demands an internal inspection.

Detached Stone Built Cottage | Two Bedrooms | 1,167 Sq ft (108.4m<sup>2</sup>) | 25ft Lounge Diner | Kitchen | Utility Room | Ground Floor WC | Bathroom with Four Piece Suite | Detached Summerhouse | Multi-Vehicle Front Driveway | Enclosed Lawned Garden | Freehold | No Onward Chain | Council Tax Band D | EPC: D



TOTAL FLOOR AREA : 1167 sq.ft. (108.4 sq.m.) approx.

Whilst every attempt has been made to ensure the accuracy of the floorplan contained here, measurements of doors, windows, rooms and any other items are approximate and no responsibility is taken for any error, omission or mis-statement. This plan is for illustrative purposes only and should be used as such by any prospective purchaser. The services, systems and appliances shown have not been tested and no guarantee as to their operability or efficiency can be given. Made with Metroplan ©2024



Offers Over £275,000

**IMPORTANT NOTE:** These particulars and the descriptions and measurements herein do not constitute representation and whilst every effort has been made to ensure accuracy, this cannot be guaranteed.

