



With no onward chain and priced to reflect cosmetic updating. This three bedroom, period mid-terrace is situated on Mundella Terrace, Heaton. Mundella Terrace, tucked just off Heaton Road and Second Avenue, is ideally placed for access to the local amenities and cafe culture of Heaton Road with excellent access to Newcastle City centre, Jesmond and the nearby universities and hospitals.

The accommodation briefly comprises: entrance lobby through to entrance hall with stairs to first floor and under-stairs storage cupboard; sitting room with walk in bay; dining room; kitchen with fitted units, work surfaces, storage alcove, dual windows and side door access to the rear yard. The split level first floor landing with storage cupboard gives access to; bedroom one with feature fireplace and dual windows; bedroom two with part fitted alcove storage; bedroom three; shower room; bathroom with dual windows. Externally, a front town garden and an enclosed yard with wall boundaries. Offered to the market with no onward chain, early viewings are advised!

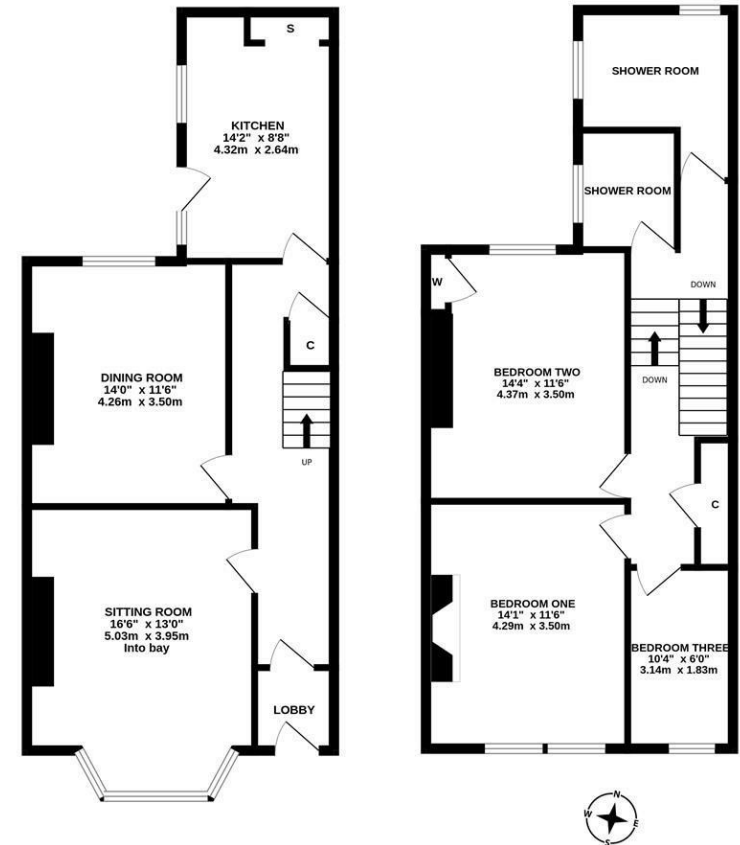
Period Mid-Terrace | 1,213 Sq ft (112.7m<sup>2</sup>)  
 | Three Bedrooms | Sitting Room | Dining Room | Kitchen | Shower Room | Bathroom | Front Town Garden & Enclosed Rear Yard | GCH | No Onward Chain | Freehold | Council Tax Band B | EPC: D

**Offers Over £260,000**

Misrepresentation Act 1967. These particulars and the descriptions and measurements herein do not constitute representation and whilst every effort has been made to ensure accuracy, this cannot be guaranteed.

GROUND FLOOR  
614 sq.ft. (57.0 sq.m.) approx.

1ST FLOOR  
599 sq.ft. (55.6 sq.m.) approx.



TOTAL FLOOR AREA: 1213 sq.ft. (112.7 sq.m.) approx.  
 Whilst every attempt has been made to ensure the accuracy of the floorplan contained here, measurements of doors, windows, rooms and any other items are approximate and no responsibility is taken for any error, omission or misstatement. This plan is for illustrative purposes only and should be used as such by any prospective purchaser. The services, systems and appliances shown have not been tested and no guarantee as to their operability or efficiency can be given.  
 Made with Metropix ©2024

