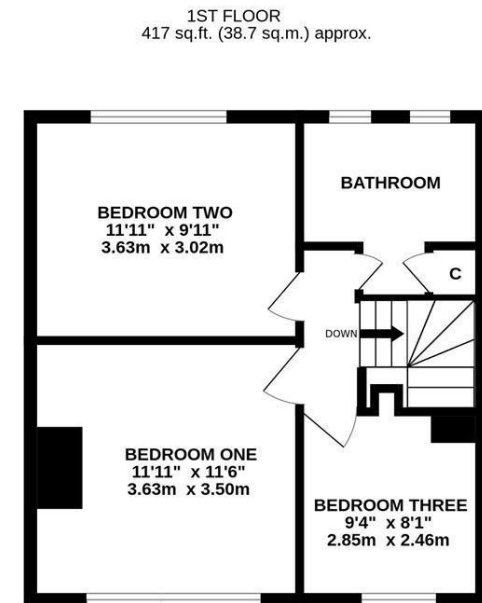
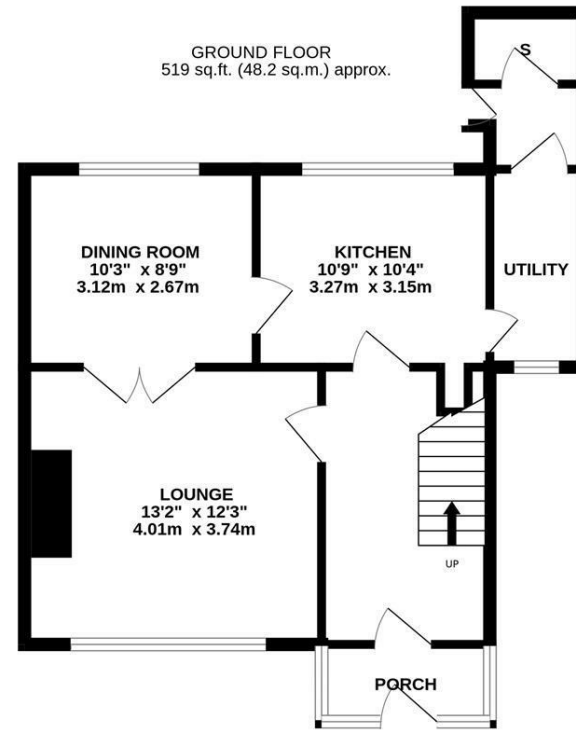




With No Onward Chain! This well presented semi-detached home is ideally located on the west backing side of Sunnyway, Blakelaw. Sunnyway, positioned between Springfield and Blakelaw Road provides excellent access to the nearby St. James's Retail Park, local schools, pubs, Aldi and Morrisons along with transport links to the A1 and in to Newcastle city centre.

The accommodation briefly comprises: entrance porch through to hallway with stairs to first floor; lounge; dining room; kitchen with fitted units and work surfaces; utility room with rear hall access; store room; hall with side door access to the garden. The first floor landing gives access to three bedrooms and a bathroom complete with dual windows, three piece suite and storage cupboard. Externally, a front driveway and garden and to the rear, a west facing garden laid to lawn and patio with some mature planting and fenced boundaries. Offered to the market with no onward chain, early viewings are advised.

Three Bedroom Semi-Detached | Well Presented | 936 Sq ft (86.9m2) | Lounge | Dining Room | Kitchen | Utility Room | Bathroom | Front Driveway | West Facing Rear Garden | GCH & DG | No Onward Chain | Freehold | Council Tax Band A | EPC: C



TOTAL FLOOR AREA: 936 sq.ft. (86.9 sq.m.) approx.

Whilst every attempt has been made to ensure the accuracy of the floorplan contained here, measurements of doors, windows, rooms and any other items are approximate and no responsibility is taken for any error, omission or mis-statement. This plan is for illustrative purposes only and should be used as such by any prospective purchaser. The services, systems and appliances shown have not been tested and no guarantee as to their operability or efficiency can be given.
Made with Metropix ©2024

Offers Over **£145,000**

IMPORTANT NOTE: These particulars and the descriptions and measurements herein do not constitute representation and whilst every effort has been made to ensure accuracy, this cannot be guaranteed.

