



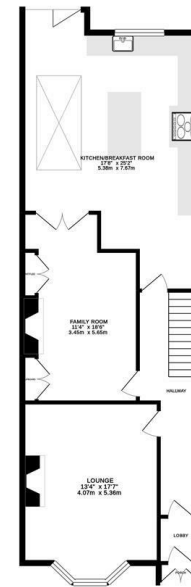
Modern luxury with period features! This stylish Victorian family home is ideally located on Windsor Terrace, South Gosforth. Windsor Terrace, a stone's throw from outstanding local schooling, is perfectly placed to give easy access to Gosforth High Street, with its cafés, shops and restaurants and South Gosforth Metro Station only a stroll away providing easy access into Newcastle City Centre and beyond.

Boasting in excess of 2,100 Sq ft, the accommodation briefly comprises: porch; entrance lobby through to entrance hall with stairs to the first floor; lounge with period fireplace and walk in bay; family room, with double doors leading to the kitchen breakfast room and alcove storage; an impressive 25ft kitchen/breakfast room with integrated appliances and bifold doors giving access to the rear yard. The first floor gives access to three bedrooms, two of which are comfortable doubles; re-fitted family bathroom, with four piece, partially tiled throughout. To the second floor, two further bedrooms, bedroom four 18ft in width, with separate eaves storage. Externally, a pleasant town garden to the front with artificial grass and tiled entrance, and to the rear an enclosed courtyard, block paved with electric roller garage door. Well presented throughout with double glazing and gas central heating, an internal inspection is absolutely essential to really appreciate everything this wonderful, period family home has to offer!



Victorian Terrace | Three Storeys | 2,111 Sq ft (196.1 m2) | Five Bedrooms | Lounge | Family Room | 25ft Extended Kitchen/Breakfast Room | Re-Fitted Family Bathroom | Town Garden & Enclosed Rear Courtyard | Period Features | Excellent Location | Freehold | Council Tax Band C | EPC: D

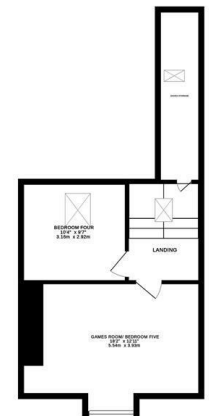
GROUND FLOOR 947 sq. ft. (87.9 sq. m.)



1ST FLOOR 714 sq. ft. (66.4 sq. m.)



2ND FLOOR 450 sq. ft. (41.8 sq. m.)



TOTAL FLOOR AREA: 2111 sq. ft. (196.1 sq. m.) approx.
 Whilst every attempt has been made to ensure the accuracy of the floorplan contained here, measurements of floors, ceilings, rooms and any other items are approximate and no responsibility is taken for any error, omission or mis-statement. This plan is for illustrative purposes only and should be used as such by any prospective purchaser. The services, systems and appliances shown have not been tested and no guarantee as to their operability or efficiency can be given.
 Made with Metreplan 10.0.0.0



Offers Over £475,000

Misrepresentation Act 1967. These particulars and the descriptions and measurements herein do not constitute representation and whilst every effort has been made to ensure accuracy, this cannot be guaranteed.

