



**\*\*AVAILABLE IMMEDIATELY\*\***  
**\*\*UNFURNISHED\*\*** **\*\*SEMI-DETACHED FAMILY HOME WITH LARGE REAR GARDEN\*\*** **\*\*GARAGE\*\***

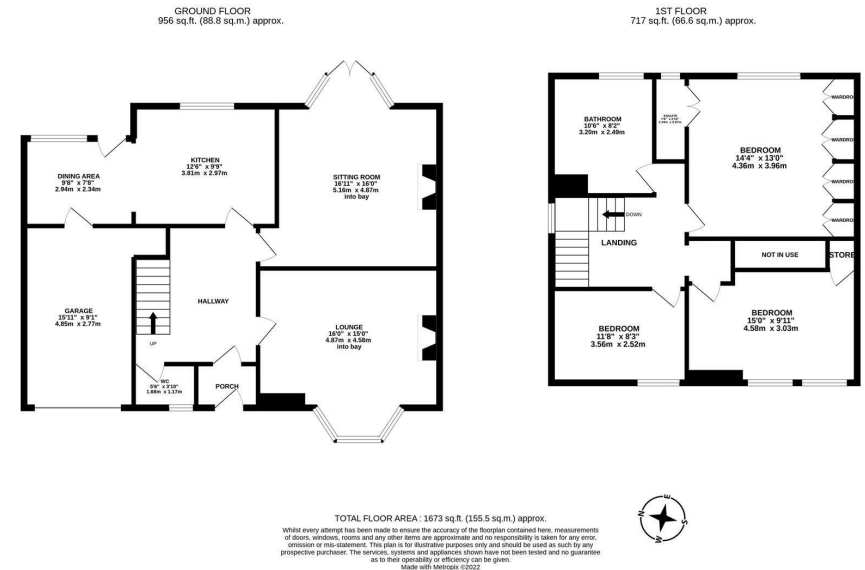
A very spacious, three bedroom semi-detached house ideally placed on the ever popular Wingrove Road North, Fenham. A wide, tree-lined avenue, Wingrove Road North is situated close to Newcastle City Centre and is perfectly placed to access to surrounding greenery, the Newcastle hospitals and only a short walk from one of the region's finest independent schools.

Well presented throughout and boasting in excess of 1,600 Sq ft, the accommodation briefly comprises: entrance porch through into an entrance hallway; lounge to the front with bay window and feature fire place; second reception room to the rear with feature fireplace, bay window and French doors leading out onto garden; ground floor WC; modern fitted kitchen with appliances open plan to a separate dining room area with spotlighting; integral garage large enough to park a small car, also providing fantastic additional storage space; the first floor comprises a spacious landing leading to three double bedrooms, two to the front one with fitted storage, the master bedroom to the rear with fitted wardrobes and benefiting from a shower room ensuite; family bathroom WC fully tiled with five-piece-suite and spotlighting. Externally there is a vast garden to the rear, laid mainly to lawn with a decked area and a shed. To the front,



set behind gates a driveway providing further off street parking.

Available Immediately | £1,600pcm | Semi-Detached House | 1,673 Sq ft (155.5 m2) | Three Double Bedrooms | Two Reception Rooms | Modern Fitted Kitchen/Dining | Ground Floor WC | Family Bathroom WC | Garage | Master En Suite | Large Rear Garden | Driveway | GCH & DG | Unfurnished | Family Home | Great Location | Council Tax Band: E | EPC Rating: E



**£1,600 PCM**

Misrepresentation Act 1967. These particulars and the descriptions and measurements herein do not constitute representation and whilst every effort has been made to ensure accuracy, this cannot be guaranteed.

