

Well Presented Three Bedroom 'Tyneside' Flat with Private West Backing Rear Yard! This unique and well presented three bedroom lower 'Tyneside' flat is ideally located on Audley Road, South Gosforth. Audley Road, a stones throw from The Brandling Villa and Sainsbury's Local, is perfectly placed close to South Gosforth Metro Station, the local shops and amenities of Station Road as well as Gosforth High Street, which is also only a short walk way.

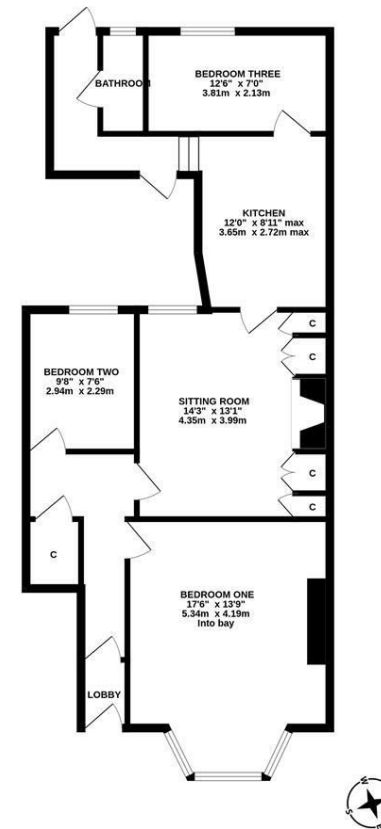


The accommodation briefly comprises: entrance lobby through to entrance hall with stripped wood flooring and under-stairs storage cupboard; sitting room with stripped wood flooring and fitted alcove storage cupboards; kitchen with a range of fitted units together with work surfaces and spot lighting, leading to the rear hallway giving further access to both the inner courtyard and separate yard; shower room complete with three piece suite; three bedrooms, bedroom one measuring 17ft with walk in bay and stripped wood flooring. Externally, an inner courtyard and a separate rear yard space, both west facing and the rear yard with gated access to the rear service lane. Early viewings are advised to avoid disappointment!

Ground Floor 'Tyneside' Flat | 823 Sq ft (76.4m²) | Three Bedrooms | Sitting Room | Kitchen | Bathroom | Inner Courtyard | Rear Yard | Popular Location | GCH | Leasehold - Tyneside Lease with 981 Years Remaining | Council Tax Band A | EPC: D

Offers Over £195,000

GROUND FLOOR
823 sq.ft. (76.4 sq.m.) approx.



TOTAL FLOOR AREA: 823 sq.ft. (76.4 sq.m.) approx.
Whilst every attempt has been made to ensure the accuracy of the floorplan contained here, measurements of doors, windows, rooms and any other items are approximate and no responsibility is taken for any error, omission or mis-statement. This plan is for illustrative purposes only and should be used as such by any prospective purchaser. The services, systems and appliances shown have not been tested and no guarantee as to their operability or efficiency can be given.
Made with Metroplan ©2024

IMPORTANT NOTE: These particulars and the descriptions and measurements herein do not constitute representation and whilst every effort has been made to ensure accuracy, this cannot be guaranteed.

