



**\*\*AVAILABLE IMMEDIATELY\*\***  
**\*\*FURNISHED\*\* \*\*PRESTIGIOUS**  
**PURPOSE BUILT APARTMENT\*\***

Located at the end of Towers Avenue, a wide tree-lined avenue, within Jesmond Dene Conservation Area and a no through road, sits this immaculately presented ground floor apartment in Towers Court. Recently constructed, the accommodation offers modern fixtures & fittings, with stylish furniture and off street parking.

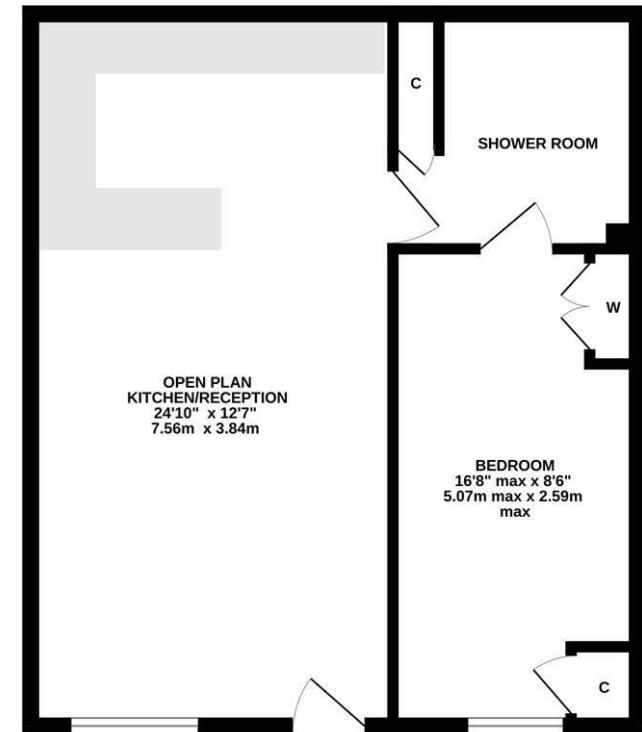
Situated on the ground floor and with it's own private entrance, the accommodation briefly comprises; spacious open plan reception, boasting 24ft, with lounge area and modern fitted kitchen with integrated appliances, spot lighting and breakfast bar; large 16ft double bedroom with fitted wardrobe space; Jack & Jill style plush shower room WC with under-floor heating. There is also a very well kept communal entrance hall, hosting post boxes and meter cupboards. Externally the property is surrounded by communal lawned borders with trees adding an element of further privacy. Also with off street residents parking.

Available Immediately | £1,295pcm | Purpose Built Apartment | Ground Floor | Private Entrance | 523 Sq ft (48.6 m2) | One Bedroom | Open Plan Lounge Reception | Modern Fitted Kitchen | Shower Room WC | Furnished | Communal Gardens | Off Street Parking | Elec Heating



& DG | Residents Bike Shed | Conservation Area | Council Tax Band: B | EPC Rating: B

GROUND FLOOR  
 523 sq.ft. (48.6 sq.m.) approx.



TOTAL FLOOR AREA : 523 sq.ft. (48.6 sq.m.) approx.  
 Whilst every attempt has been made to ensure the accuracy of the floorplan contained here, measurements of doors, windows, rooms and any other items are approximate and no responsibility is taken for any error, omission or mis-statement. This plan is for illustrative purposes only and should be used as such by any prospective purchaser. The services, systems and appliances shown have not been tested and no guarantee is given as to their operability or efficiency can be given.  
 Made with Metropix ©2024



**£1,295 PCM**

Misrepresentation Act 1967. These particulars and the descriptions and measurements herein do not constitute representation and whilst every effort has been made to ensure accuracy, this cannot be guaranteed.

