



****AVAILABLE AUGUST 2024****
****UNFURNISHED**** ****STUNNING**
RESIDENTIAL MAISONNETTE ******
****PROPERTY CAN ONLY BE LET TO**
MAX TWO INDIVIDUALS** Recently
 refurbished throughout, this smart and
 stylish maisonette is situated on Elmfield
 Road, within Gosforth's Conservation Area
 and only a stone's throw from Gosforth High
 Street, this outstanding property is found
 close to an abundance of local transport
 links and amenities.

Set back from the road and boasting over
 1,400 sq ft of internal living accommodation
 the property briefly comprises; entrance
 hallway on the ground floor with stairs
 leading to first floor; the first floor has a
 split-level landing leading to lounge at the
 front with log burner; separate study; storage
 cupboard; bedroom four with shower en-
 suite; family bathroom including bath, step
 in shower and sink with a separate WC;
 modern fitted kitchen to the rear with
 integrated appliances, sky-lighting and door
 providing access to rear yard. The second
 floor hosts a store cupboard housing the
 boiler; three further bedrooms, bedrooms
 one & two sizeable doubles, bedroom one
 also benefiting from an en-suite shower
 room. Externally there is on street permit
 parking to the front, to the rear a shared
 yard space with access to rear service lane.

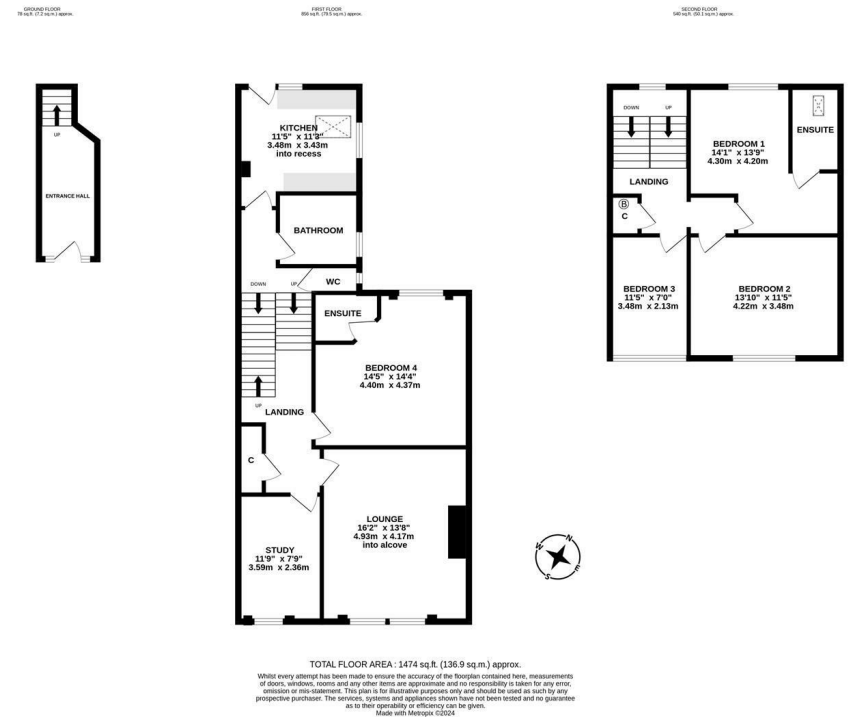
Very well presented throughout and
 available on an unfurnished basis, this



excellent property will make the ideal home
 for a family or professional couple.

Please Note: this property can only be let to a
 single family household or maximum of two
 individual sharers.

Available 16th August 2024 | £1,750pcm |
 1st & 2nd Floor Maisonette | 1,474 Sq ft
 (136.9 m2) | Recently Refurbished
 Throughout | Four Bedrooms | Lounge |
 Study | Modern Fitted Kitchen | Family
 Bathroom | Separate WC | Two En-Suite
 Shower Rooms | On Street Permit Parking |
 Shared Rear Yard | Excellent Location |
 Gosforth Conservation Area | Unfurnished |
 Council Tax Band: C | DG & GCH | EPC
 Rating: C



£1,750 PCM

Misrepresentation Act 1967. These particulars and the descriptions and measurements herein do not constitute representation and whilst every effort has been made to ensure accuracy, this cannot be guaranteed.

