



****AVAILABLE JULY 2024****
****UNFURNISHED**** ****SEMI-DETACHED FAMILY HOME WITH LARGE REAR GARDEN**** ****GARAGE****

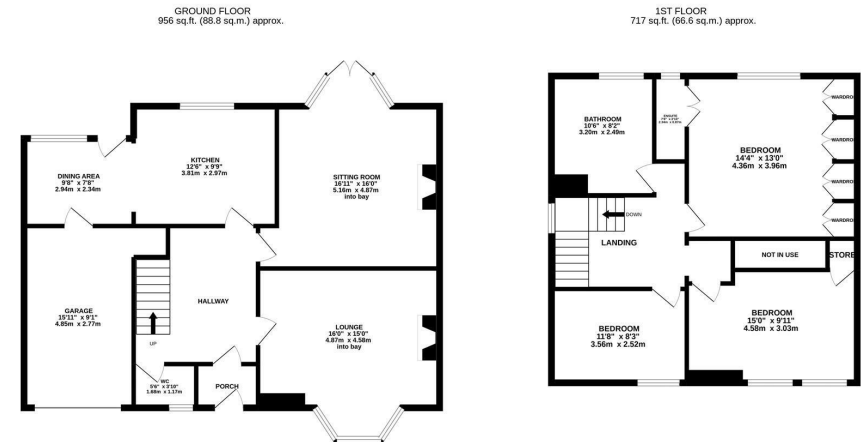
A very spacious, three bedroom semi-detached house ideally placed on the ever popular Wingrove Road North, Fenham. A wide, tree-lined avenue, Wingrove Road North is situated close to Newcastle City Centre and is perfectly placed to access to surrounding greenery, the Newcastle hospitals and only a short walk from one of the region's finest independent schools.

Well presented throughout and boasting in excess of 1,600 Sq ft, the accommodation briefly comprises: entrance porch through into an entrance hallway; lounge to the front with bay window and feature fire place; second reception room to the rear with feature fireplace, bay window and French doors leading out onto garden; ground floor WC; modern fitted kitchen with appliances open plan to a separate dining room area with spotlighting; integral garage large enough to park a small car, also providing fantastic additional storage space; the first floor comprises a spacious landing leading to three double bedrooms, two to the front one with fitted storage, the master bedroom to the rear with fitted wardrobes and benefiting from a shower room ensuite; family bathroom WC fully tiled with five-piece-suite and spotlighting. Externally there is a vast garden to the rear, laid mainly to lawn with a decked area and a shed. To the front,



set behind gates a driveway providing further off street parking.

Available 19th July 2024 | £1,600pcm | Semi-Detached House | 1,673 Sq ft (155.5 m2) | Three Double Bedrooms | Two Reception Rooms | Modern Fitted Kitchen/Dining | Ground Floor WC | Family Bathroom WC | Garage | Master En Suite | Large Rear Garden | Driveway | GCH & DG | Unfurnished | Family Home | Great Location | Council Tax Band: E | EPC Rating: E



£1,600 PCM

Misrepresentation Act 1967. These particulars and the descriptions and measurements herein do not constitute representation and whilst every effort has been made to ensure accuracy, this cannot be guaranteed.

