

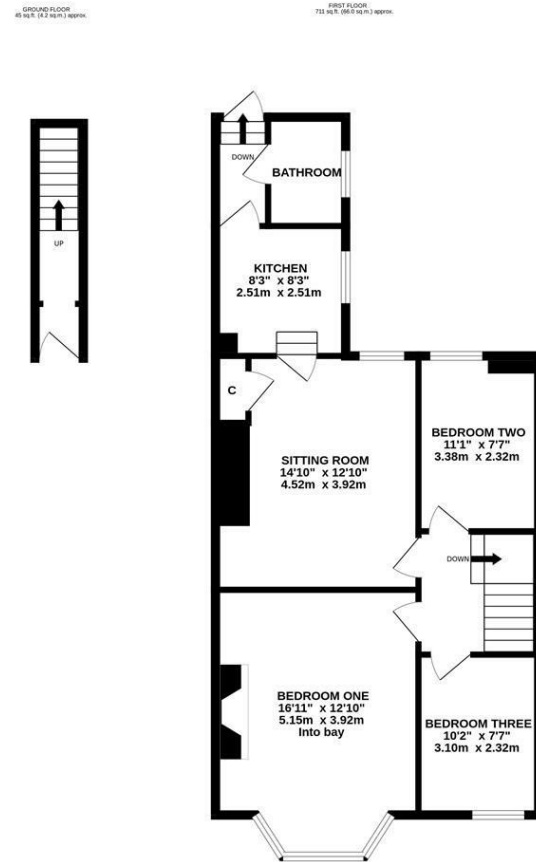


This well presented, three bedroom upper 'Tyneside' flat is ideally located on the Chillingham Road end of Rothbury Terrace, Heaton. The property itself is well placed to provide easy access to the surrounding greenery and also the shops, cafes and restaurants of Chillingham Road, which are also just a short walk away. The property also benefits from good local transport links via the number one bus service which provides easy access into Newcastle City Centre and beyond.



The accommodation briefly comprises: entrance hall with stairs to first floor landing; sitting room with part fitted alcove storage; stylish kitchen with fitted units, work surfaces and rear stairs access to the yard; bathroom complete with three piece suite; three bedrooms, bedroom one with feature fireplace and walk in bay. Externally, a shared rear yard with wall boundaries and gated access to the rear service lane. Fully double glazed with gas 'combi' heating, this delightful property demands an internal inspection!

Well Presented Upper Floor 'Tyneside' Flat | 756 Sq ft (70.3m²) | Three Bedrooms | Sitting Room | Kitchen | Bathroom | Shared Rear Yard | Great Location | Leasehold - Tyneside Lease with Peppercorn Rent - 998 Years | Council Tax Band A | EPC: C



TOTAL FLOOR AREA: 756 sq.ft. (70.3 sq.m.) approx.
 Whilst every attempt has been made to ensure the accuracy of the floorplan contained herein, measurements of doors, windows, rooms and any other items are approximate and no responsibility is taken for any error, omission or mis-statement. This plan is for illustrative purposes only and should be used as such by any prospective purchaser. The services, systems and appliances shown have not been tested and no guarantee as to their operability or efficiency can be given.
 Made with MergeX ©2024

Offers Over £165,000

IMPORTANT NOTE: These particulars and the descriptions and measurements herein do not constitute representation and whilst every effort has been made to ensure accuracy, this cannot be guaranteed.

