

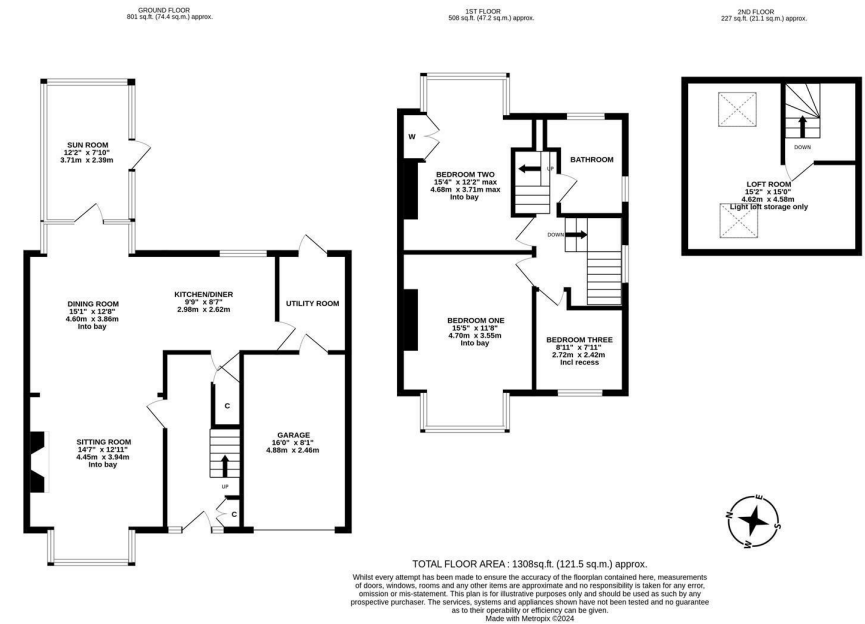
WITH NO ONWARD CHAIN! This three bedroom semi-detached family home is ideally located on The Ridgeway, Kenton. Close to excellent local schools, The Ridgeway, positioned just off Salters Road is well situated to access to the nearby local shops, the restaurants and cafes of Gosforth High Street as well as immediate access to the A1 western bypass.

The accommodation briefly comprises: entrance hall with stairs to first floor, under-stairs storage cupboard and separate storage cupboard; sitting room with walk in bay and feature fireplace, open to dining room with walk in bay, sun room access and stripped wood flooring, open to kitchen diner with a range of fitted units, work surfaces and some integrated appliances; utility room with rear door access to the garden and integral access to the 16ft garage; sun room with dual aspect windows and side door access to the rear garden. The split level first floor landing gives access to three bedrooms, bedrooms one and two measuring 15ft, both with walk in bays, bedroom two also with fitted alcove wardrobe storage; family bathroom complete with three piece suite. To the second floor, a generous loft room measuring 15ft with two Velux windows. Externally to the front, a lawned garden, driveway and dwarf wall boundary. To the rear, a mature garden laid mainly to lawn with a mixture of mature planting including flowers and shrubs, a paved pathway, all enclosed with fenced boundaries. Offered to the market with no



onward chain, early viewings are advised!

Semi-Detached Family Home | 1,308 Sq ft (121.5m²) | Three Bedrooms | Sitting Room | Dining Room | Kitchen Diner | Utility Room | Sun Room | Family Bathroom | Loft Room | Garage | Front Garden & Driveway | Enclosed Rear Garden | GCH | No Onward Chain | Freehold | Council Tax Band C | EPC: E



Offers Over £275,000

Misrepresentation Act 1967. These particulars and the descriptions and measurements herein do not constitute representation and whilst every effort has been made to ensure accuracy, this cannot be guaranteed.

