



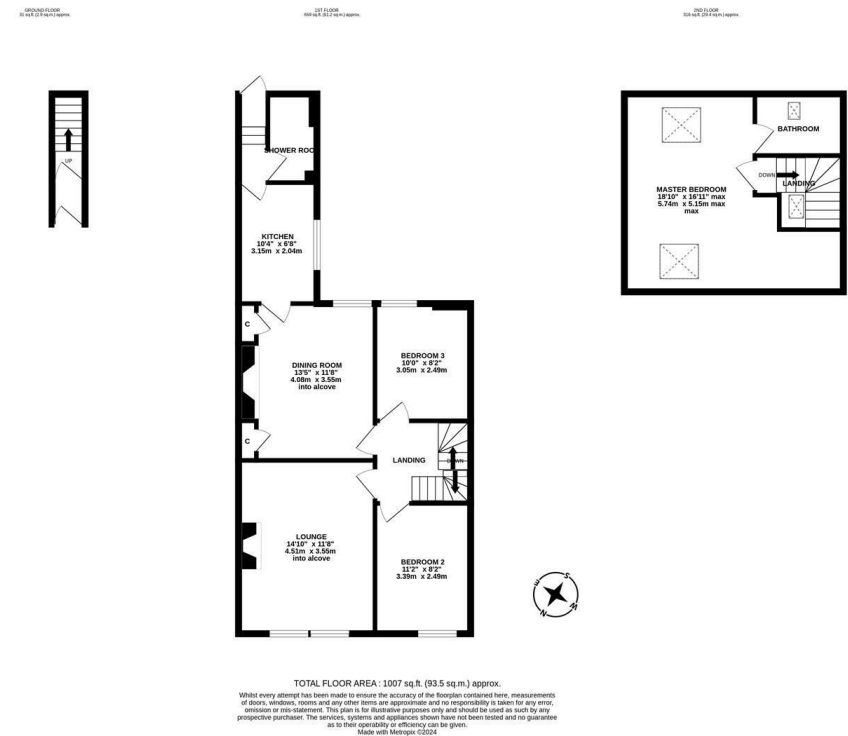
****AVAILABLE IMMEDIATELY****
****UNFURNISHED**** ****STYLISH UPPER MAISONETTE**** A smart and very well presented upper maisonette found in central Gosforth, Ashfield Road. Walking distance to a choice of local conveniences and transport links, this attractive residential property is ideal for professionals and is not to be missed!

The property briefly comprises; private entrance on the ground floor with stairs leading to first floor landing; lounge to the front with feature fireplace and plantation shutters on the windows; bedroom two to the front, a comfortable double & bedroom three to the rear which could also be utilised as a wardrobe area or study if preferred; dining room central to the first floor with feature fireplace and alcove storage cupboards; modern fitted kitchen to the rear off shoot with appliances; shower room WC, tiled with spotlighting; the 2nd floor comprises an 18ft master bedroom with skylighting, spotlights and benefitting from an en suite bathroom WC. Externally there is a private yard to the rear and on street parking to the front. Available on an unfurnished basis with gas central heating, double glazing, this fantastic property simply demands an early internal inspection!

Available Immediately | £1,250pcm | Unfurnished | Upper Maisonette | 1,007 Sq ft (93.5 m2) | Lounge | Dining Room | Three Bedrooms | Fitted Kitchen | Shower



Room WC | 2nd Floor Bathroom WC | Great Central Gosforth Location | Private Rear Yard | On Street Parking | Close To Transport Links | GCH & DG | Council Tax Band: B | EPC Rating: C



£1,250 PCM

Misrepresentation Act 1967. These particulars and the descriptions and measurements herein do not constitute representation and whilst every effort has been made to ensure accuracy, this cannot be guaranteed.

