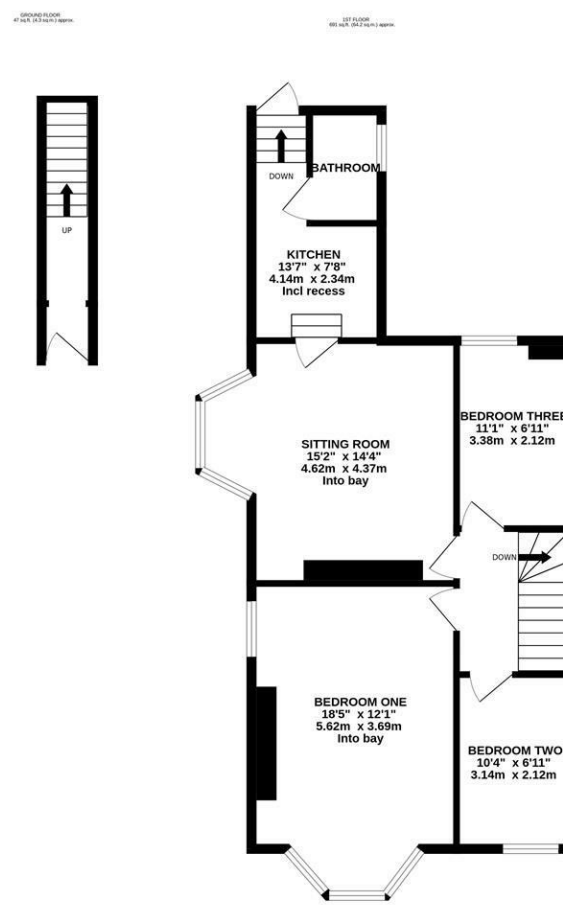




This three bedroom upper 'Tyneside' flat is ideally located on the Rothbury Terrace, Heaton. The property itself is well placed to provide easy access to the surrounding greenery and also the shops, cafes and restaurants of Chillingham Road, which are also just a short walk away. The property also benefits from good local transport links via the number one bus service which provides easy access into Newcastle City Centre and beyond.

The accommodation briefly comprises: entrance lobby through to entrance hall with stairs to first floor landing; sitting room with west facing walk in bay; kitchen with fitted units, work surfaces and stairs to the rear yard; bathroom complete with three piece suite; three bedrooms, bedroom one measuring 18ft with south facing walk in bay. Externally, an enclosed yard with wall boundaries and gated access to the rear service lane. With gas 'combi' central heating and double glazing, early viewings are a must.

Upper Floor 'Tyneside' Flat | Three Bedrooms | 738 Sq ft (68.5m²) | Sitting Room | Kitchen | Bathroom | Enclosed Rear Yard | GCH & DG | Leasehold - Tyneside Lease with Peppercorn Rent - 975 Years Remaining | Popular Location | Council Tax Band A | EPC: D



TOTAL FLOOR AREA: 738 sq ft (68.5 sq.m.) approx.
 Whilst every attempt has been made to ensure the accuracy of the floorplan contained herein, measurements of doors, windows, rooms and any other items are approximate and no responsibility is taken for any error, omission or mis-statement. This plan is for illustrative purposes only and should be used as such by any prospective purchaser. The services, systems and appliances shown have not been tested and no guarantee as to their operability or efficiency can be given.
 Made with Mempro ©2004

Offers Over £150,000

Misrepresentation Act 1967. These particulars and the descriptions and measurements herein do not constitute representation and whilst every effort has been made to ensure accuracy, this cannot be guaranteed.

