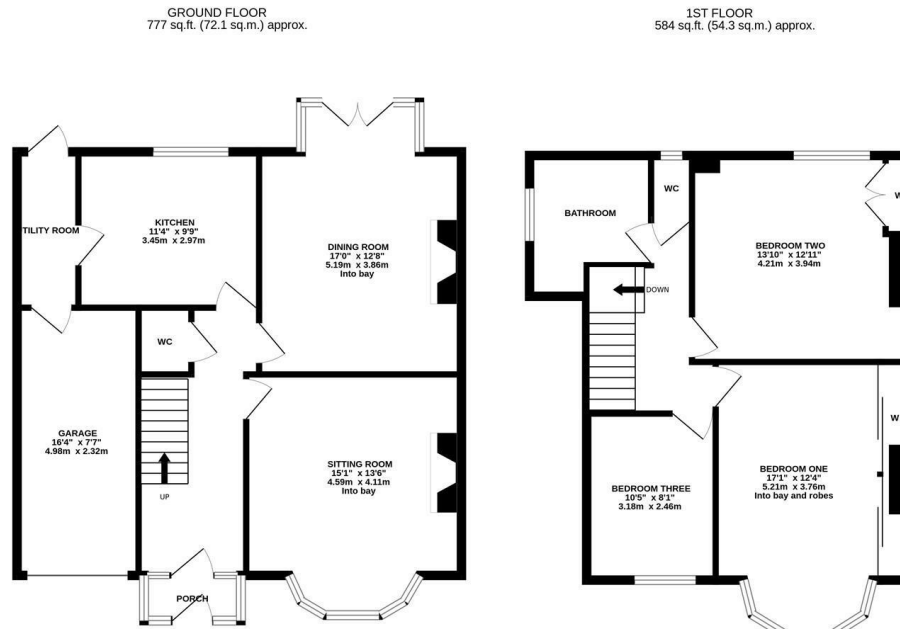




SOUTH FACING GARDEN! This traditional three bedroom 1930s semi is ideally placed on Fenham Hall Drive, Fenham. Close to Newcastle City Centre, surrounding greenery and the Newcastle Hospitals, Fenham Hall Drive is just a walk to one of the region's finest independent schools.

The accommodation briefly comprises: entrance porch through to entrance hall with stairs to first floor and under-stairs WC; sitting room with walk in bay and feature fireplace; dining room with walk in bay and feature fireplace; kitchen with fitted units and work surfaces; utility room with rear door access to the garden and access to the 16ft garage. The first floor landing gives access to three bedrooms, bedroom one with walk in bay and fitted wardrobe storage and bedroom two with fitted wardrobe storage; bathroom with separate WC. Externally, a block paved front driveway providing off-street parking, leading to the 16ft garage. To the rear, an enclosed south facing garden laid mainly to lawn with a mixture of mature planting including flowers, trees and shrubs, together with a paved patio area, all enclosed with fenced boundaries. Early viewings are advised!

1930s Semi-Detached | 1,361 Sq ft (126.2m²) | Three Bedrooms | Sitting Room | Dining Room | Kitchen | Utility Room | Downstairs WC | Bathroom with Separate WC | 16ft Garage | Front Driveway | Enclosed South Facing Rear Garden | GCH | Freehold | Council Tax Band C | EPC: D



TOTAL FLOOR AREA: 1361 sq.ft. (126.4 sq.m.) approx.
 Whilst every attempt has been made to ensure the accuracy of the floorplan contained here, measurements of doors, windows, rooms and any other items are approximate and no responsibility is taken for any error, omission or mis-statement. This plan is for illustrative purposes only and should be used as such by any prospective purchaser. The services, systems and appliances shown have not been tested and no guarantee as to their operability or efficiency can be given.
 Made with Metropix ©2024



Offers Over £225,000

IMPORTANT NOTE: These particulars and the descriptions and measurements herein do not constitute representation and whilst every effort has been made to ensure accuracy, this cannot be guaranteed.

