



This three bedroom period mid-terrace is ideally positioned on Cardigan Terrace, Heaton. Cardigan Terrace, tucked just off Heaton Road is well placed for access to the local amenities and cafe culture of Heaton Road, with excellent access to the green spaces of Heaton Park and Jesmond Dene, Newcastle City Centre, and the nearby Universities and Hospitals.

The accommodation briefly comprises: entrance hall, open to dining room with stairs to first floor; sitting room with walk in bay and part alcove storage; dining room with under-stairs storage cupboard; 25ft kitchen diner with two west facing windows, kitchen area with a range of fitted units, work surfaces, spot lighting and side door access to the yard. The split level first floor landing with two storage cupboards gives access to three bedrooms, bedrooms one and two both comfortable doubles; family bathroom complete with three piece suite. Externally, a north-west facing yard, enclosed with wall boundaries. Positioned in a popular location, early viewings are advised!

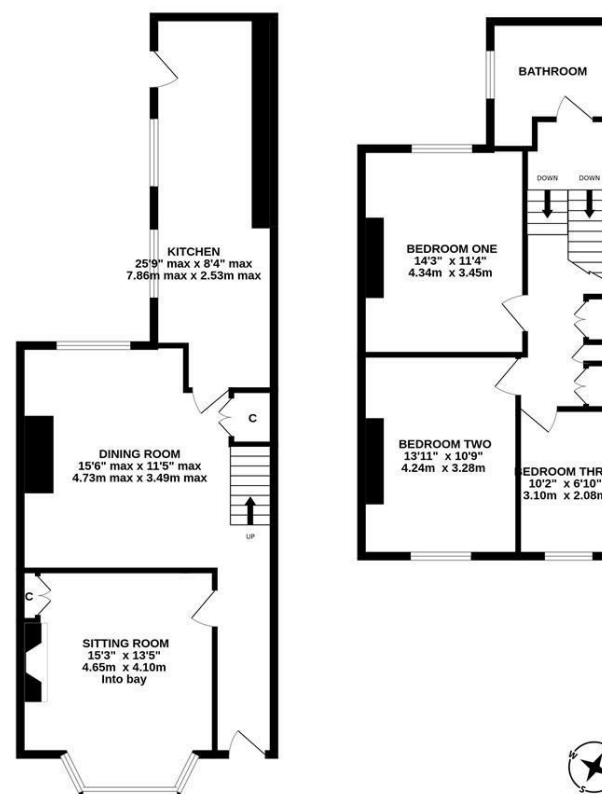
Three Bedroom Mid-Terrace | 1,223 Sq ft (113.6m²) | Sitting Room | Dining Room | 25ft Kitchen | Bathroom with Three Piece Suite | North-West Facing Yard | GCH | Freehold | Great Location | Council Tax Band B | EPC: D

Offers Over £250,000



GROUND FLOOR
666 sq.ft. (61.9 sq.m.) approx.

1ST FLOOR
556 sq.ft. (51.7 sq.m.) approx.



Whilst every attempt has been made to ensure the accuracy of the floorplan contained here, measurements of doors, windows, rooms and any other items are approximate and no responsibility is taken for any error, omission or mis-statement. This plan is for illustrative purposes only and should be used as such by any prospective purchaser. The services, systems and appliances shown have not been tested and no guarantee as to their operability or efficiency can be given.
Made with Metroplan ©2024

IMPORTANT NOTE: These particulars and the descriptions and measurements herein do not constitute representation and whilst every effort has been made to ensure accuracy, this cannot be guaranteed.

