

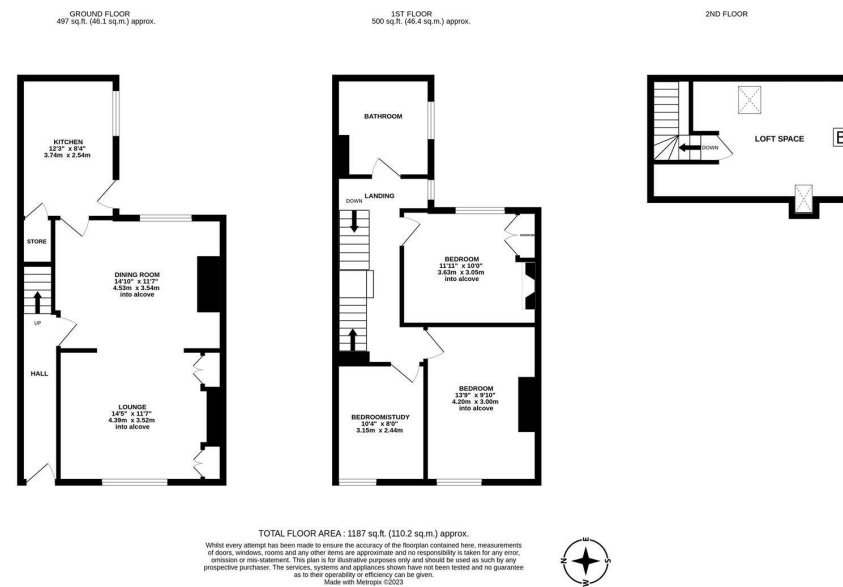
STYLISH PRESENTATION with GENEROUS REAR YARD! This charming mid-terrace is ideally located on the popular Richardson Street, Heaton. Tucked just off Chillingham Road, a stones throw from the shops, cafés and restaurants of both Chillingham Road and Heaton Road, Richardson Street is also well placed to provide easy access to local transport links into Newcastle City Centre and beyond. The property also provides excellent access to the delightful Heaton Park, Armstrong Park, Iris Brickyard and indeed to the Ouseburn which are all within walking distance.

The accommodation briefly comprises: entrance hall with stairs to first floor; lounge with stripped wood flooring, feature wood burning stove and fitted alcove storage, open to dining room with stripped wood flooring; kitchen with a range of fitted units, hardwood work surfaces, some integrated appliances, under-stairs storage cupboard and side door access out to the rear yard. The first floor landing gives access to three bedrooms, bedrooms one and both doubles with painted wood flooring and bedroom two also with fitted alcove storage; family bathroom complete with four piece suite including a free standing roll top bath and spot lighting. The stairs to the second floor provide access to a generous loft space, which could be used/converted (with the necessary planning permission in place). Externally, a generous and well presented rear yard laid to raised decking and gravel



with wall and fenced boundaries and gated access to the rear service lane. Offered to the market with no onward chain, early viewings are advised!

Stylish Mid-Terrace | 1,187 Sq ft (110.2m²)
 | Three Bedrooms | Lounge to Dining Room
 | Kitchen | Bathroom with Four Piece Suite
 | Loft Space | Generous Rear Yard | Popular Location | Freehold | Council Tax Band B | EPC: C



Offers Over £260,000

Misrepresentation Act 1967. These particulars and the descriptions and measurements herein do not constitute representation and whilst every effort has been made to ensure accuracy, this cannot be guaranteed.

