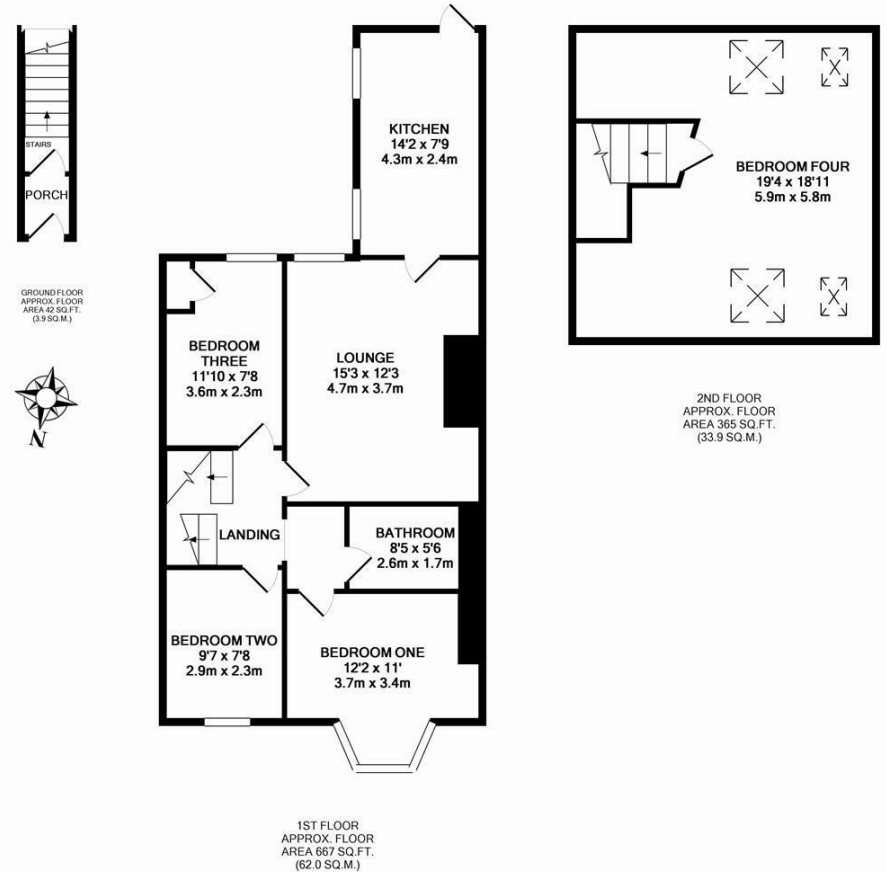


INVESTMENT OPPORTUNITY - CURRENTLY LET - PRE-LET FOR 2024/25 STUDENT ACADEMIC YEAR AT £20,384 PER ANNUM - GROSS YIELD 8.6% AT OFFERS OVER PRICE!
 This four bedroom upper floor maisonette is ideally located on Grosvenor Gardens, Jesmond Vale. Situated close to Jesmond Dene, the cafés, shops and restaurants of Jesmond, excellent local transport links and indeed Newcastle City Centre itself.



The property briefly comprises an entrance hallway, lounge, kitchen, bathroom WC and four bedrooms. Furnished with double glazing and gas central heating. Externally, there is a yard to the rear and on street parking to the front.

Investment Opportunity | Currently Let at £16,432 Per Annum | Pre-Let for 2024/25 Student Year at £20,384 Per Annum | Upper Maisonette | Four Bedrooms | 1,073 Sq. ft (99.7m²) | Lounge | Kitchen | Bathroom WC | Rear Yard | On Street Parking | DG & GCH | Leasehold - Tyneside Lease with Peppercorn Rent | Council Tax Band B | EPC Rating: E



Whilst every attempt has been made to ensure the accuracy of the floor plan contained here, measurements of doors, windows, rooms and any other items are approximate and no responsibility is taken for any error, omission, or mis-statement. This plan is for illustrative purposes only and should be used as such by any prospective purchaser. The services, systems and appliances shown have not been tested and no guarantee as to their operability or efficiency can be given.
 Made with Metropix ©2016

Offers Over £235,000

Misrepresentation Act 1967. These particulars and the descriptions and measurements herein do not constitute representation and whilst every effort has been made to ensure accuracy, this cannot be guaranteed.

