



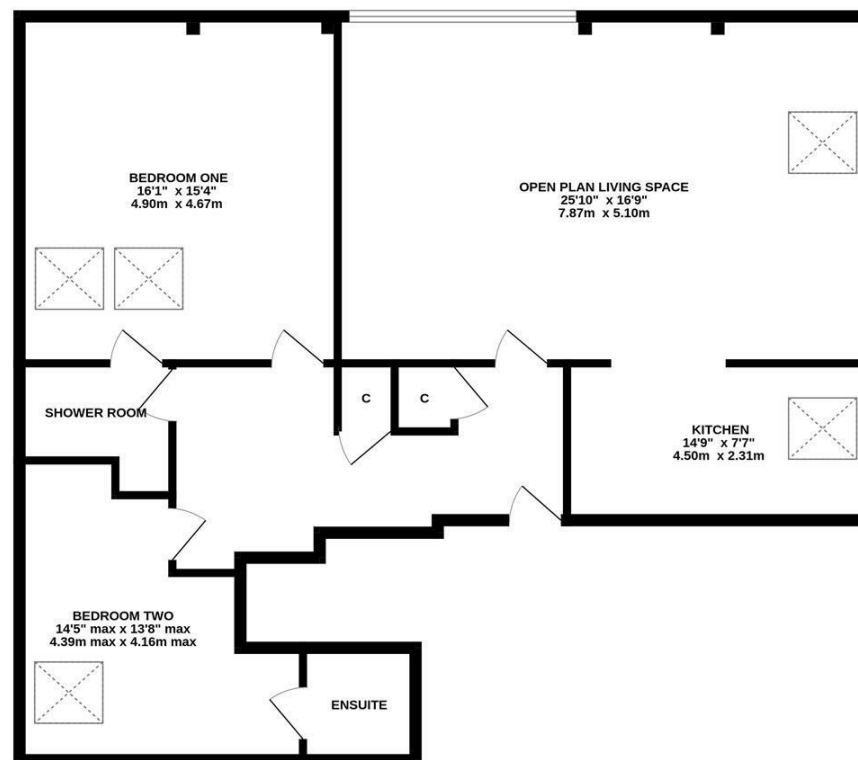
With No Onward Chain! This generous two bedroom, purpose built apartment is ideally located to the fourth floor of Connaught Mews, Jesmond. Connaught Mews, which was originally constructed in 2004, is ideally located within Jesmond and is tucked just off St Georges Terrace providing excellent access to both Osborne Road & Acorn Road with its shops, cafés and restaurants. The apartment is also placed within striking distance to West Jesmond Metro Station providing easy access throughout the region and indeed Newcastle City Centre itself.

Boasting close to 1,200 Sq ft, the accommodation briefly comprises: communal entrance door with key code entry system and lift access to the fourth floor; private entrance hall with two storage cupboards; open plan living space measuring almost 26ft, with south west facing window, and separate Velux window, open to kitchen with a range of fitted units, work surfaces Velux window and spot lighting; bedroom one with two Velux windows; shower room complete with three piece suite; bedroom two with Velux window and acces to an en-suite bathroom, again complete with three piece suite. With covered off-street parking and no onward chain, early viewings are advised.

Modern Purpose Built Apartment | Fourth Floor | 1,177 Sq ft (109.3m2) | Two Bedrooms | Open Plan Living Space to Kitchen | Shower Room | En-Suite Bathroom | Off-Street Parking | No Onward Chain | Leasehold | 103 years remaining | Service Charge £2,649.15 | Ground Rent £100 PA | Council Tax Band C | EPC C.



FOURTH FLOOR
1177 sq.ft. (109.3 sq.m.) approx.



TOTAL FLOOR AREA: 1177 sq.ft. (109.3 sq.m.) approx.
Whilst every attempt has been made to ensure the accuracy of the floorplan contained here, measurements of doors, windows, rooms and any other items are approximate and no responsibility is taken for any error, omission or mis-statement. This plan is for illustrative purposes only and should be used as such by any prospective purchaser. The services, systems and appliances shown have not been tested and no guarantee as to their operability or efficiency can be given.
Made with Metriplex ©2023

Offers Over £170,000

IMPORTANT NOTE: These particulars and the descriptions and measurements herein do not constitute representation and whilst every effort has been made to ensure accuracy, this cannot be guaranteed.

