

REDMAN CASEY ESTATE AGENTS

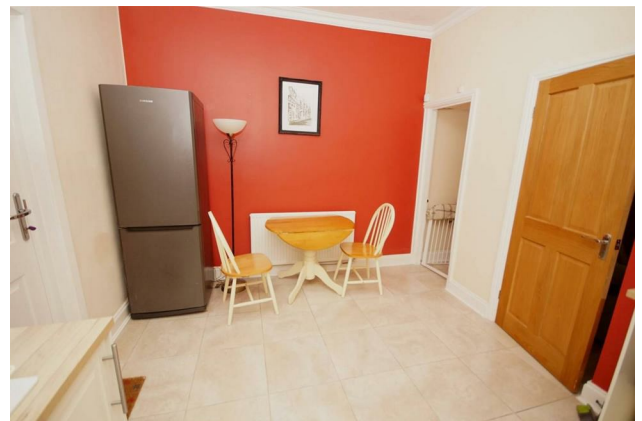
4 Essex Street, Horwich, Bolton, Greater Manchester, BL6 6ET



£795 Per Month

69 Winter Hey Lane Horwich Bolton Greater Manchester BL6 7NT
Tel: 01204 329990 | Fax: | Email: sales@redmancasey.co.uk
www.redmancasey.co.uk

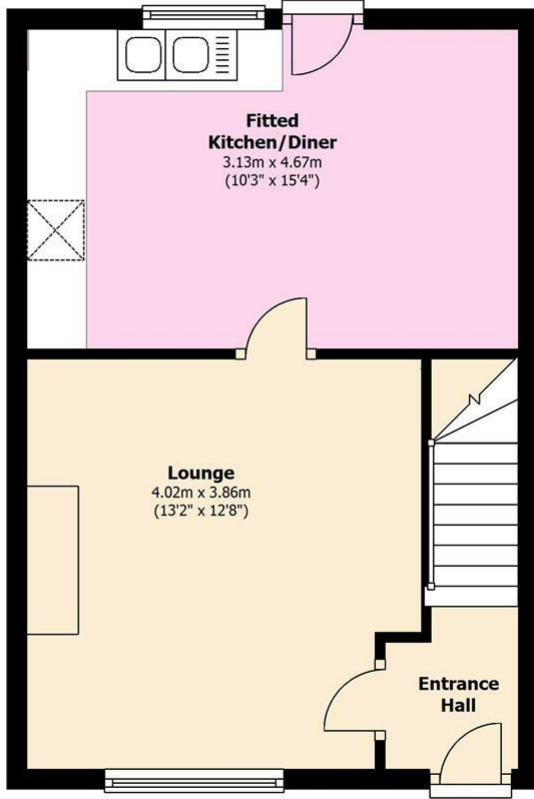






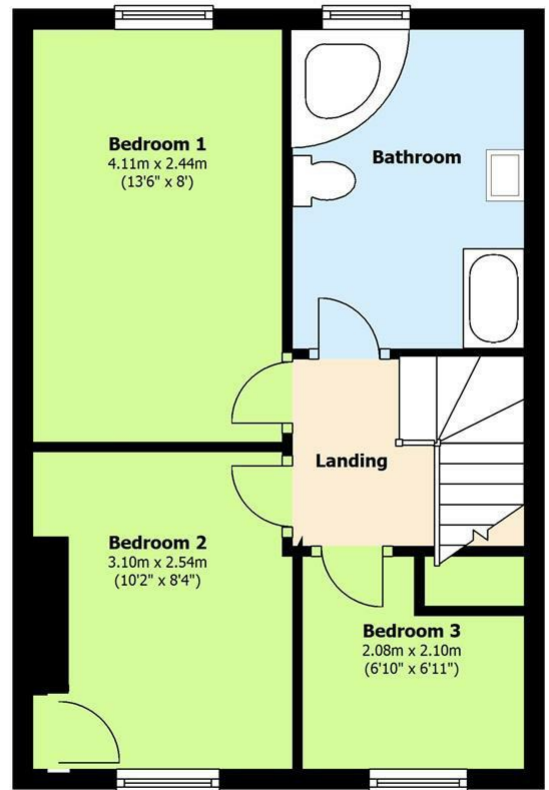
Ground Floor

Approx. 33.5 sq. metres (360.6 sq. feet)



First Floor

Approx. 33.4 sq. metres (359.9 sq. feet)



Total area: approx. 66.9 sq. metres (720.6 sq. feet)

Energy Efficiency Rating

	Current	Potential
Very energy efficient - lower running costs		
(92 plus) A		89
(81-91) B		
(69-80) C		
(55-68) D	62	
(39-54) E		
(21-38) F		
(1-20) G		
Not energy efficient - higher running costs		
England & Wales	EU Directive 2002/91/EC	

Environmental Impact (CO₂) Rating

	Current	Potential
Very environmentally friendly - lower CO ₂ emissions		
(92 plus) A		89
(81-91) B		
(69-80) C		
(55-68) D	58	
(39-54) E		
(21-38) F		
(1-20) G		
Not environmentally friendly - higher CO ₂ emissions		
England & Wales	EU Directive 2002/91/EC	

