



2 Riverlight Quay, London  
SW11

GARTONJONES.COM

## 2 Riverlight Quay, London , SW11

### £1,100 Per Week

Stunning views from this spacious 2 double bedroom, direct river facing apartment in Riverlight. This furnished property, consisting of approx. 1114sq.ft (103.50sq.m) has a dual aspect open plan reception room with a smart integrated kitchen, 2 luxury bathrooms (1 en-suite), 2 balconies and secure parking. Residents of Riverlight Quay benefit from exclusive facilities to include a fantastic Heated Swimming Pool, Jacuzzi, Sauna and Steam Room as well as a well-equipped mezzanine “river view” Gymnasium. There is also a reception lounge and library, 24-hour concierge and a private cinema screening room and virtual golf room. The on-site amenities include the Black Cab Coffee Co, Nine Elms Tavern and Waitrose supermarket and there are plenty of nearby new restaurants and bars adding to the increasing vibrancy of Nine Elms. Nine Elms Tube Station and Battersea Power Station Northern Line tube stops are now open and both a short walk away from Riverlight Quay.

- Electricity Supply — Mains | Water Supply — Mains | Sewerage — Mains | Heating — Comfort Cooling
- Broadband & Mobile Signal: Check Coverage via Ofcom
- Parking: Parking Included
- Lift Access
- Building Safety: EWS1 Available on Request
- Council Tax Band G (London Borough of Wandsworth)
- 5 Week Security Deposit
- Holding deposit equivalent to 1 week of rent
- Rent to be payable monthly in advance
- EPC Rating B (83)

- 2 Bedrooms
- 1,114sq.ft (103.5sq.m)
- 2 Luxury Bathrooms (1 En-Suite)
- Open Plan Reception
- River Facing Aspect
- Parking
- Swimming Pool & Spa Facilities, 24 Hour Concierge
- Residents Gym
- Cinema Screening Room & Virtual Golf
- 0.2 Miles to Battersea Power Station Tube

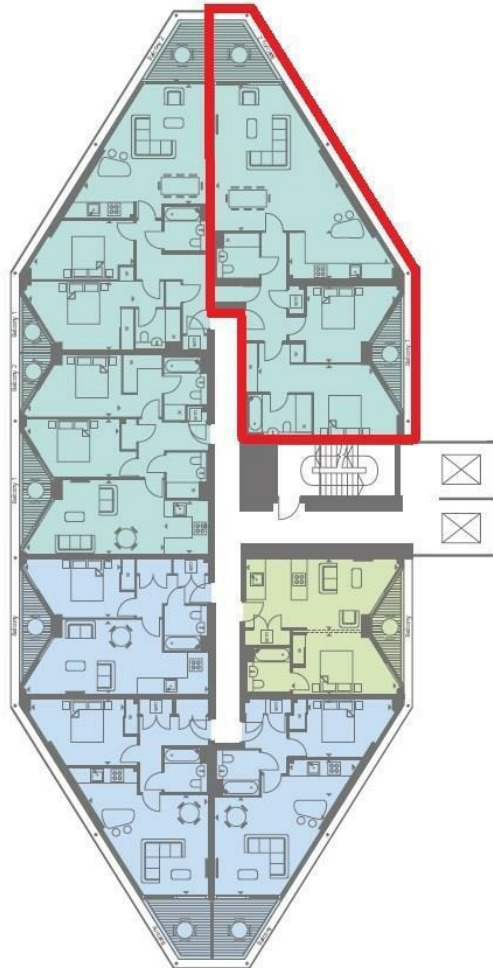
GARTON JONES.COM

9 Albert  
Embankment  
London  
SE1 7SP

Lettings:  
+44 (0) 20 7735 1888  
nineelms@gartonjones.com  
www.gartonjones.com



Thames River



|                                      |                               |
|--------------------------------------|-------------------------------|
| INTERNAL AREA M <sup>2</sup> / SQ FT | 103.50 / 1114                 |
| EXTERNAL AREA M <sup>2</sup> / SQ FT | 11.59 / 124                   |
| Living / Dining                      | 6.96m x 6.91m / 22'8" x 22'6" |
| Kitchen                              | 4.71m x 2.27m / 15'4" x 7'4"  |
| Bedroom 1                            | 5.33m x 3.49m / 17'4" x 11'4" |
| Bedroom 2                            | 4.24m x 3.61m / 13'9" x 11'8" |
| Balcony 1                            | 5.46m x 1.50m / 17'9" x 4'9"  |
| Balcony 2                            | 3.25m x 2.80m / 10'6" x 9'1"  |

