



1 Albert Embankment, London
SE1

GARTON JONES.COM

1 Albert Embankment, London
, SE1

GARTON JONES.COM

9 Albert
Embankment
London
SE1 7SP

Lettings:
+44 (0) 20 7735 1888
nineelms@gartonjones.com
www.gartonjones.com

£865 Per Week

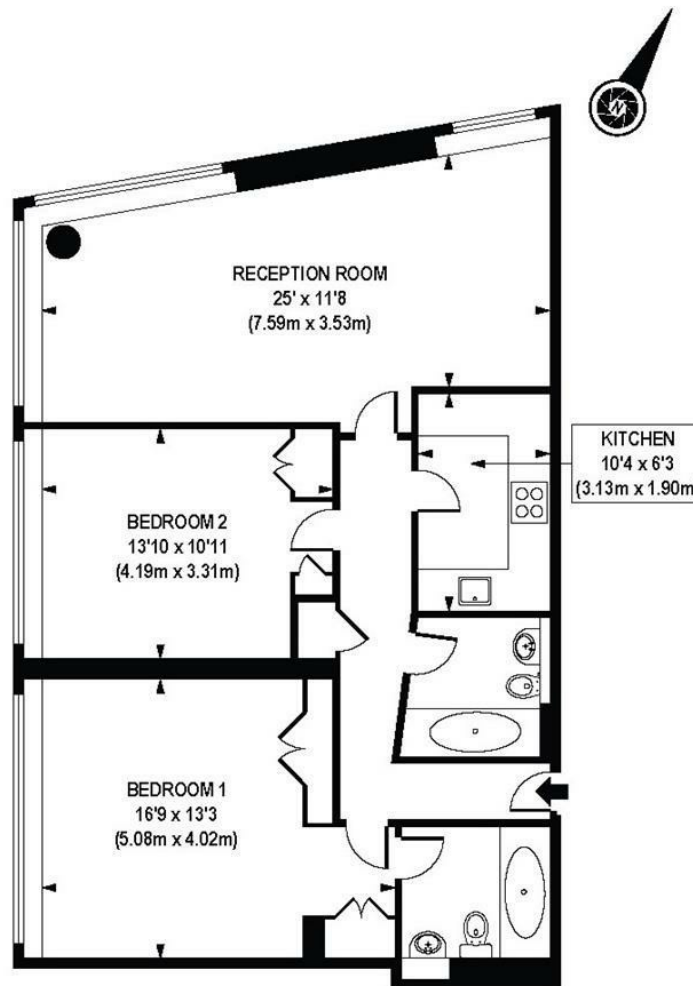
A fantastic dual-aspect 2-bedroom apartment offering 889sq.ft (82.5sq.m) available to rent in Parliament View Apartments, a modern riverside development on the banks of the River Thames next to Lambeth Bridge. The apartment is a bright corner unit enjoying direct views of the River Thames towards the Houses of Parliament and has the benefit of a separate kitchen and air-conditioning. Please note parking can be arranged via separate agreement.

Residents of Parliament View benefit from additional on-site amenities including a 24-hour concierge service and a resident's gymnasium. Transport links are excellent with a frequent bus service on the doorstep and the rail and tube services of Vauxhall Station only moments away. The amenities of Westminster are a short walk across Lambeth Bridge.

Please note furniture may differ to that shown in the current photos.

- 2 Bedrooms
- 889sq.ft (82.5sq.m)
- 2 Bathrooms (1 En-Suite)
- Separate Kitchen
- Spacious Reception
- Dual Aspect
- Views of the River Thames
- 24 Hour Concierge
- Residents Gym
- 0.5 Miles from Lambeth North Station





FOURTH FLOOR

APPROXIMATE GROSS INTERNAL AREA 889 sq. ft / 82.56 sq. m

