



24 Albert Embankment, London  
SE1

GARTON JONES.COM

24 Albert Embankment, London  
, SE1

£950 Per Week

GARTON JONES.COM

9 Albert  
Embankment  
London  
SE1 7SP

Lettings:  
+44 (0) 20 7735 1888  
nineelms@gartonjones.com  
www.gartonjones.com

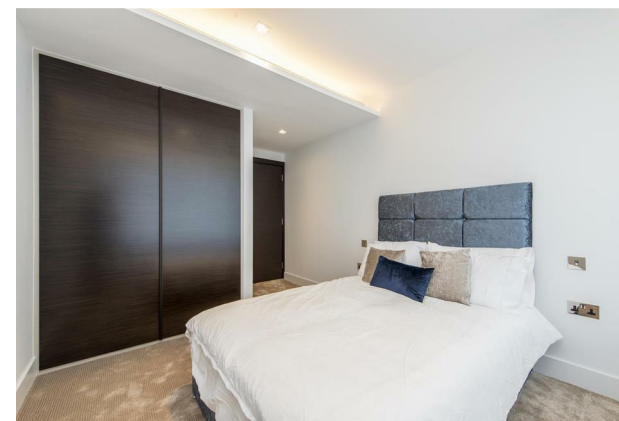
A direct River Facing 2-bedroom apartment to rent of approx. 842sq.ft (78sq.m) in the Corniche, a landmark development by St James, located on the South Bank of the River Thames in between Lambeth Bridge and Vauxhall Bridge. This furnished property further benefits from an open plan reception room with a fully fitted interior designed kitchen with Miele appliances, a balcony enjoying direct views of the River Thames, there are 2 luxury bathrooms (1 en-suite) and good storage throughout including a utility cupboard and fitted wardrobes to both bedrooms.

Designed by the internationally acclaimed architectural practise, Foster and Partners, residents will further benefit from a 24-hour concierge service, a Skyline Club Lounge with a terrace enjoying amazing London views, there is an extensive health and wellness suite offering spa treatments, a gymnasium with private training facilities and an indoor infinity pool and screening room. You will be within easy reach of many local shops, bars and restaurants and transport links are also excellent.

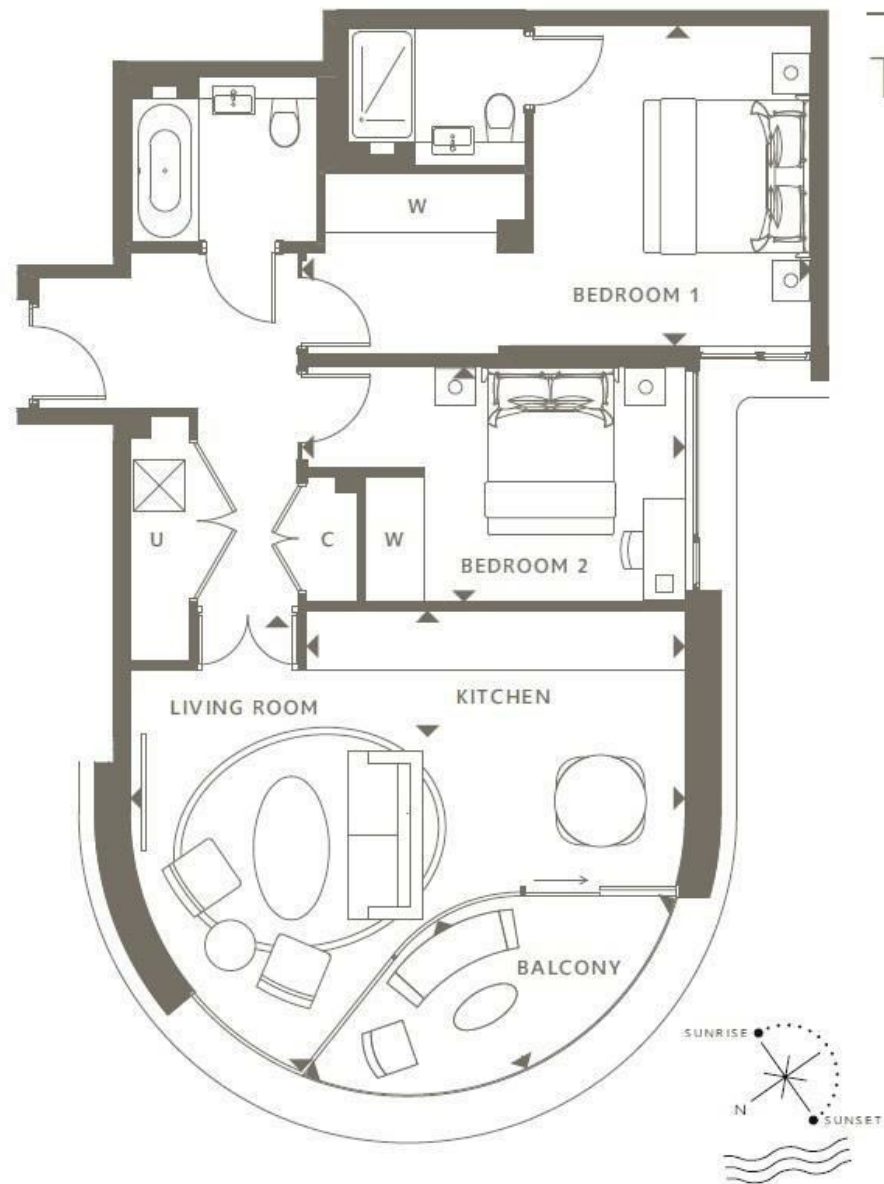
Please note furniture may differ to that shown in the current photos.

- Electricity Supply — Mains | Water Supply — Mains | Sewerage — Mains | Heating — Comfort Cooling
- Broadband & Mobile Signal : Check Coverage via Ofcom
- Parking: No Parking Included
- Lift Access
- Building Safety: EWS1 Available on Request
- Council Tax Band G (London Borough of Lambeth)
- 5 Week Security Deposit
- Holding deposit equivalent to 1 week of rent
- Rent to be payable monthly in advance
- EPC Rating B (85)

- 2 Bedrooms
- 842sq.ft (78sq.m)
- Open Plan Reception Room
- Balcony
- Views of the River Thames
- Residents Gym
- Swimming Pool, Spa, Jacuzzi, Steam Room & Sauna
- 19th Floor Residents Lounge & Bar
- Cinema Screening Room & Bowling Alley
- 0.4 Miles to Vauxhall Station







## TWO BEDROOM APARTMENT

Living Room*	6.60 x 5.40m	21'8" x 17'9"
Kitchen	4.50 x 1.50m	14'9" x 4'11"
Bedroom 1	6.06 x 3.79m	19'11" x 12'5"
Bedroom 2	4.55 x 2.79m	14'11" x 9'2"
Balcony	4.84 x 2.01m	15'11" x 6'7"
<b>Total Internal Area</b>	<b>78.24 m<sup>2</sup></b>	<b>842.1 ft<sup>2</sup></b>
<b>Total External Area</b>	<b>6.24 m<sup>2</sup></b>	<b>67.1 ft<sup>2</sup></b>



