



9 Albert Embankment, London  
SE1

GARTON JONES.COM



# 9 Albert Embankment, London , SE1

GARTON JONES.COM

9 Albert  
Embankment  
London  
SE1 7SP

Sales +44 (0) 20 7735 1888  
nineelms@gartonjones.com  
www.gartonjones.com

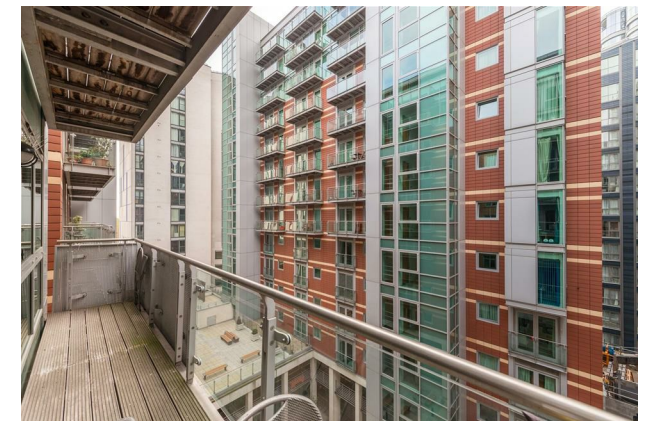
## £600 Per Week

A spacious 2-bedroom apartment of 580sq.ft (54sq.m) currently set up as a 1 bed with separate study/dining space available to rent in 9 Albert Embankment, a popular modern residential development set on the banks of the River Thames. This furnished apartment also has an open plan reception room with a modern integrated kitchen and is in a quiet position overlooking the communal courtyard.

Residents have the benefit of a 24-hour concierge and an on-site convenience store as well as a host of local bars, restaurants, and cafes to choose from in the immediate area. Transport links are very good with Vauxhall, Waterloo and Westminster Rail and Tube services all within an easy walking distance as well as benefitting from having the River Thames on your doorstep within easy walking distance of the London Southbank and all it has to offer.

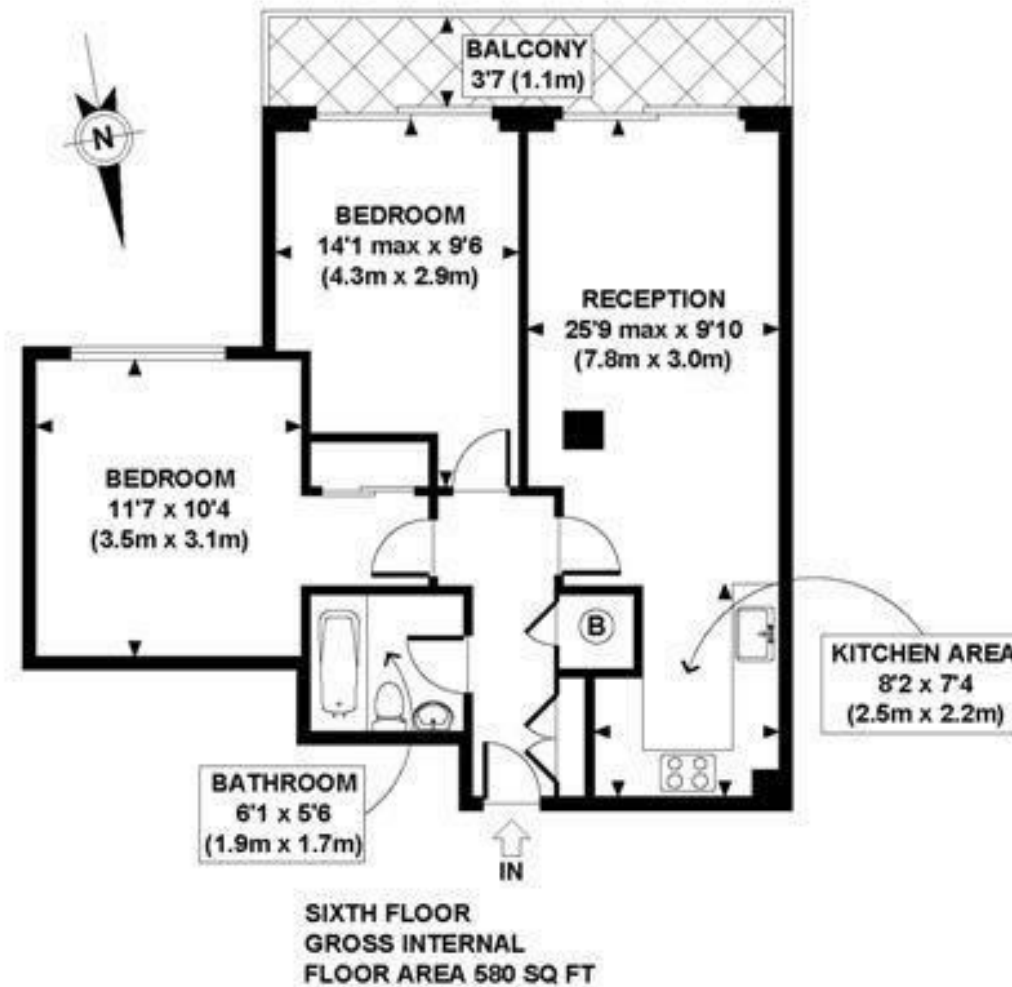
Please note furniture may differ to that shown in the current photos.

- 1 Bedroom
- 580sq.ft (54sq.m)
- Study/Dining Room
- Open Plan Reception
- Modern Integrated Kitchen
- Balcony
- 24 Hour Concierge
- On-Site Convenience Store
- Moments from River Thames
- 0.5 Miles to Vauxhall Station



EPC certificate available on request.





**APPROX. GROSS INTERNAL FLOOR AREA 580 SQ FT / 54 SQ M**

Ref: MJGJW - Copyright **photoplan.co.uk**

Floorplans are for identification and guideline purposes only, not to scale.  
Compliant with RICS code of measuring practice.

