



3 Salamanca Place, London  
SE1

GARTON JONES.COM



## 3 Salamanca Place, London , SE1

### £525 Per Week

A beautifully presented, spacious 1 bedroom apartment of 556sq.ft (51.7sq.m) available to rent in 3 Salamanca Place, a modern riverside development located between Lambeth & Vauxhall Bridges. Renovated to a high standard, this furnished property consists of 1 double bedroom, an open plan reception room with modern integrated kitchen, good storage throughout, and a modern bathroom suite. The building benefits from lift access and an on-site convenience store, as well as being moments from several cafes, pubs & shops. Transport links are excellent with the rail and tube services of Vauxhall a short walk away and a frequent bus service to the West End and City on the doorstep.

Please note furniture may differ to that shown in the current photos.

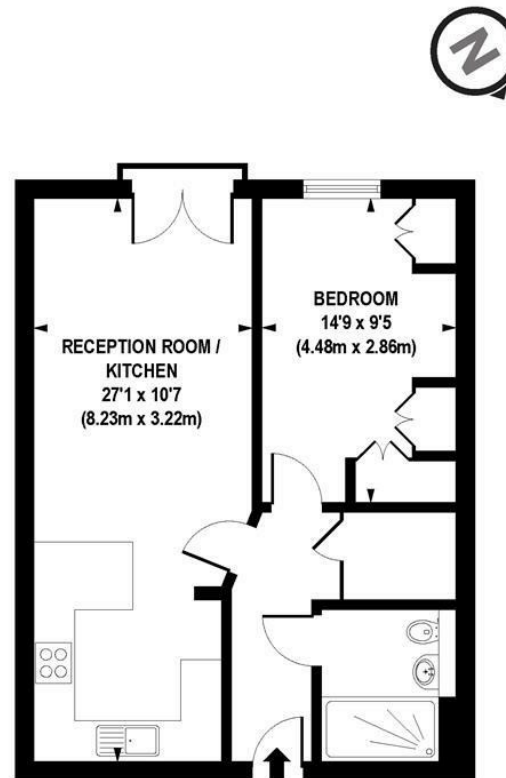
- 1 Bedroom
- 556sq.ft (51.7sq.m)
- Renovated to a High Standard
- 4th Floor
- Open Plan Reception
- Modern Kitchen
- Good Storage
- Lift
- Quiet Courtyard Views
- 0.6 Miles to Vauxhall Station

## GARTON JONES.COM

9 Albert  
Embankment  
London  
SE1 7SP

Lettings:  
+44 (0) 20 7735 1888  
[nineelms@gartonjones.com](mailto:nineelms@gartonjones.com)  
[www.gartonjones.com](http://www.gartonjones.com)





APPROX. GROSS INTERNAL AREA FLOOR 556 sq. ft / 51.70 sq. m

Floorplan is for illustrative purposes only and is not to scale.  
Every attempt has been made to ensure the accuracy of the floorplan shown, however all measurements,  
fixtures, fittings and data shown are an approximate interpretation for illustrative purposes only.  
Liability for errors, omissions or mis-statement through negligence or otherwise is hereby excluded.

**CP CREATIVE**  
PROPERTY MARKETING



