



2 Riverlight Quay, London
SW11

GARTONJONES.COM



2 Riverlight Quay, London
, SW11

GARTON JONES.COM

9 Albert
Embankment
London
SE1 7SP

Lettings:
+44 (0) 20 7735 1888
nineelms@gartonjones.com
www.gartonjones.com

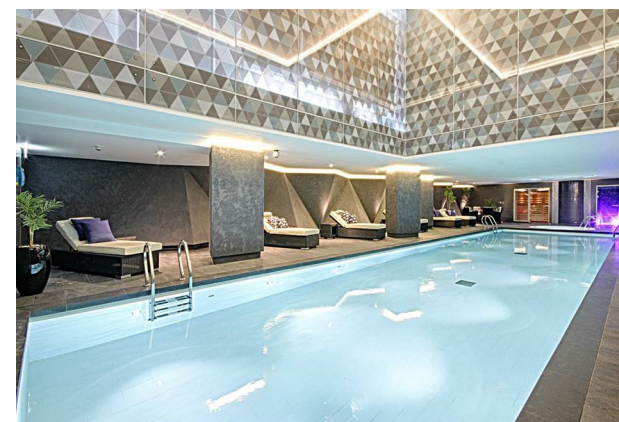
£1,038 Per Week

A bright and spacious 2-bedroom, 2-bathroom (1 en-suite) apartment of approx. 1133sq.ft (105.30sq.m) on the 8th floor of Riverlight Quay, located on the banks of the River Thames in the heart of Nine Elms. The furnished property further benefits from a South-East dual aspect open plan reception room with full height floor to ceiling windows benefitting from unrivalled natural light. There is also a smart integrated kitchen, 2 spacious balconies and fantastic on-site facilities including a health spa with a "river view" gymnasium, a heated swimming pool, virtual golf, a resident's lounge and a 24-hour concierge service.

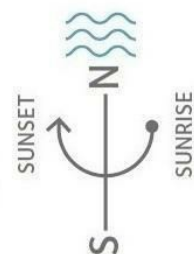
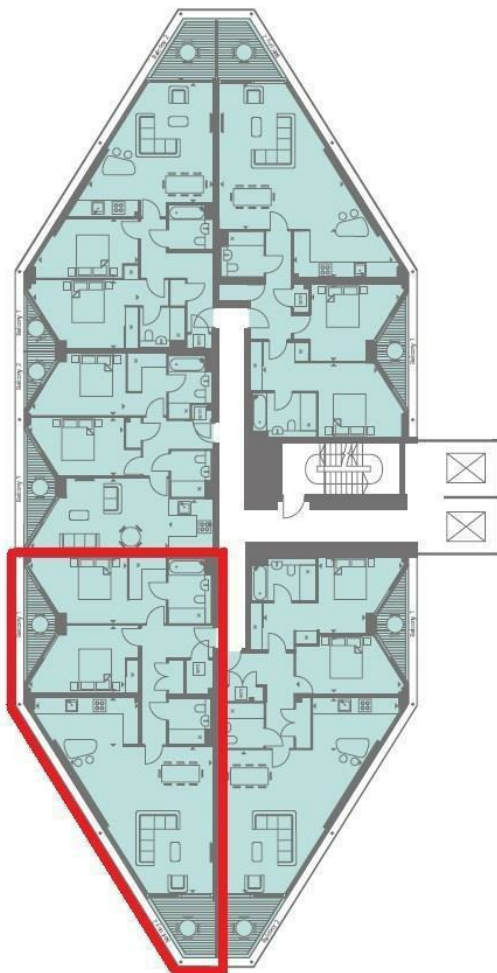
Riverlight is well located for access to local shopping facilities at Waitrose Nine Elms, as well as exciting new Bars & Restaurants forming the Nine Elms regeneration. Battersea Power Station is a short walk away with the shopping centre providing further amenities on your doorstep. Nine Elms Tube Station and Battersea Power Station Tube Stations are also close by providing the Northern Line tube service allowing easy access into Central London, as are the transport links of Vauxhall, including rail, tube, bus, and a river taxi service.

Please note furniture may differ to that shown in the current photos.

- 2 Bedrooms
- 1,133sq.ft (105.3sq.m)
- 2 Bathrooms (1 En-Suite)
- Open Plan Reception with Smart Integrated Kitchen
- South East Aspect
- 2 Balconies
- Residents Gym,
- 24 Hour Concierge
- Health Spa & Swimming Pool
- 0.2 Miles to Battersea Power Station Tube Station



Thames River



INTERNAL AREA M ² / SQ FT	105.30 / 1133
EXTERNAL AREA M ² / SQ FT	11.59 / 124
Living / Dining	6.96m x 6.91m / 22'8" x 22'6"
Kitchen	4.70m x 2.17m / 15'4" x 7'1"
Bedroom 1	4.48m x 3.11m / 14'6" x 10'2"
Bedroom 2	4.39m x 3.11m / 14'4" x 10'2"
Balcony 1	5.46m x 1.50m / 17'9" x 4'9"
Balcony 2	3.25m x 2.80m / 10'6" x 9'1"

