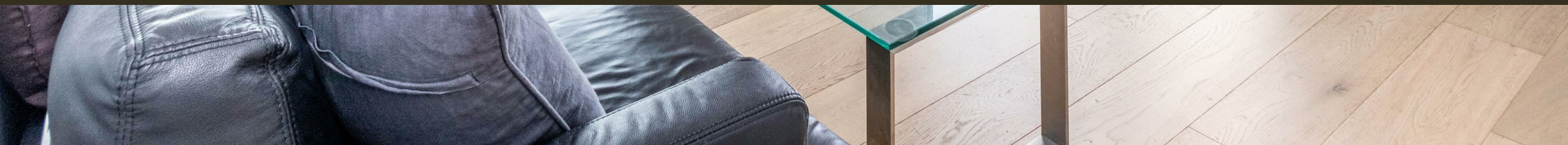




81 Black Prince Road, London
SE1

GARTONJONES.COM



81 Black Prince Road, London
, SE1

GARTON JONES.COM

9 Albert
Embankment
London
SE1 7SP

Lettings:
+44 (0) 20 7735 1888
nineelms@gartonjones.com
www.gartonjones.com

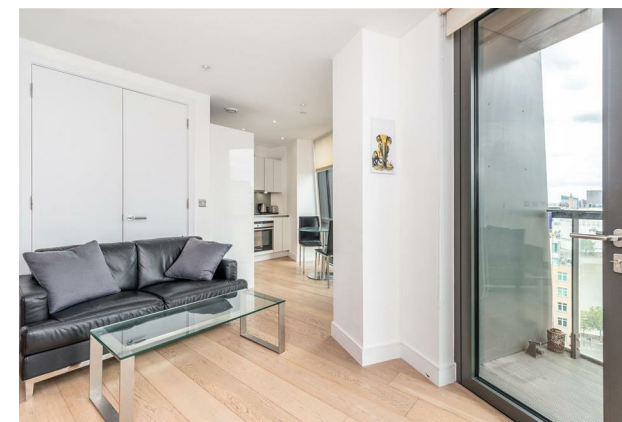
£650 Per Week

A stunning 2-bedroom dual aspect apartment of 575sq.ft (53sq.m) available to rent in Parliament House, a popular residential development built by Telford Homes, moments from the River Thames. This luxury property offers breath-taking views towards Westminster, the Houses of Parliament, the River Thames and beyond. There are 2 bathrooms including en-suite to the master bedroom, an open plan reception room, smart integrated kitchen, balcony, and good storage. Residents also enjoy a concierge service, exclusive resident's gymnasium and designer interiors and cycle storage. Parliament House is a 23-storey tower within easy reach of the excellent transport services of Vauxhall and London's trendy South Bank. The benefits include a central London location with most of London's attractions being within walking distance. The building also offers cycle storage and excellent bus routes on your doorstep.

Please note there are currently building works on the exterior of the building. Parliament House does not currently hold a satisfactory EWS1 rating, however, there are interim fire safety measures in place. Furniture may differ to that shown in the current photos.

- Electricity Supply — Mains | Water Supply — Mains | Sewerage — Mains | Heating — Underfloor Heating
- Broadband & Mobile Signal : Check Coverage via Ofcom
- Parking: No Parking Included
- Lift Access
- Building Safety: Parliament House does not currently hold a satisfactory EWS1 rating and remedial works are required, however, there are interim measures in place
- Council Tax Band F (London Borough of Lambeth)
- 5 Week Security Deposit
- Holding deposit equivalent to 1 week of rent
- Rent to be payable monthly in advance
- EPC Rating C (79)

- 2 Bedrooms
- River facing 575sq.ft (53sq.m) aspect
- 2 Bathrooms (1 En-Suite)
- Balcony
- Views of the River Thames, Houses of Parliament & London Eye
- Open Plan Reception
- Modern Integrated Kitchen
- Day Porter
- Residents Gym
- 0.6 Miles to Vauxhall Station





VIEW TOWARDS
ALBERT
EMBANKMENT,
WESTMINSTER,
THE THAMES &
LONDON EYE



Total Area	53.4 sq m	575 sq ft
------------	-----------	-----------

